

Community Health Needs Assessment

CHI LakeWood Health – Baudette, MN
Approved May 2025



NDSU Center for Social Research Report #123
Prepared by Nancy Hodur, Kaeleigh Schroeder, and Avram Slone

Acknowledgements

The CHNA process is a significant undertaking resulting from the vision and leadership of numerous individuals and governing bodies. It is important to acknowledge those who have dedicated time and energy to ensure that thoughtful planning and long-range strategic vision serve as the basis for policy and decision-making regarding community health needs.

Researchers with the Center for Social Research at North Dakota State University gratefully acknowledge the support of the individuals and organizations who assisted in the preparation of the Community Health Needs Assessment for CHI LakeWood Health in Baudette, MN.

Financial support was provided by CHI Health, a member of CommonSpirit Health.

North Dakota State University does not discriminate on the basis of age, color, disability, gender expression/identity, genetic information, marital status, national origin, public assistance status, race, religion, sex, sexual orientation, or status as a U.S. veteran. Please address your inquiries regarding this publication to: The NDSU Center for Social Research, P.O. Box 6050, Dept. 2574, Fargo, ND 58108-6050, Phone: 701-231-8621, Email: Nancy.Hodur@ndsu.edu

NDSU is an equal opportunity institution.

Copyright © 2025 by Hodur, Schroeder, and Slone. All rights reserved. Readers may make verbatim copies of this document for non-commercial purposes by any means, provided this copyright notice appears on all such copies.

Table of Contents

Executive Summary.....	2
Purpose.....	2
CommonSpirit Health Commitment and Mission Statement.....	2
CHNA Collaborators.....	2
Community Definition.....	2
Assessment Process and Methods.....	2
Prioritized of Significant Health Needs.....	3
Resources Potentially Available.....	4
Report Adoption, Availability, and Comments.....	5
Community Definition.....	5
Hospital Description.....	6
Assessment Process and Methods.....	7
Secondary data: community profiles.....	7
Primary data: health needs survey and community discussion.....	7
Community Input.....	7
Assessment Data and Findings.....	8
Community Profile.....	8
Community Demographics.....	8
Community Health Factors and Outcomes.....	11
National Risk Index.....	13
Community Health Survey Analysis.....	15
Demographics.....	15
Findings.....	15
Significant Community Health Needs.....	21
Resources Potentially Available to Address Needs.....	22
Impact of Actions Taken Since Preceding CHNA.....	23
2023- 2025 Community Health Implementation Strategy.....	23
Health Need: Lack of Health Care Providers.....	23
Health Need: Substance Abuse.....	25
Health Need: Mental Health.....	27
References.....	28
Appendices.....	29
Appendix A: CDC/ASTDR Social Vulnerability Index 2022, Lake of the Woods County, MN.....	29
Appendix B: Survey Instrument.....	30
Appendix C: Survey Frequencies.....	42

Executive Summary

Purpose

The purpose of this community health needs assessment (CHNA) is to identify and prioritize significant health needs of the community served by CHI LakeWood Health in Baudette, Minnesota. The priorities identified in this report help to guide the hospital's community health improvement programs and community benefit activities, as well as its collaborative efforts with other organizations that share a mission to improve health. This CHNA report meets requirements of the Patient Protection and Affordable Care Act that not-for-profit hospitals conduct a community health needs assessment at least once every three years.

CommonSpirit Health Commitment and Mission Statement

The hospital's commitment to engaging with the community, assessing priority needs, and helping to address them with community health program activities is in keeping with its mission. As CommonSpirit Health, we make the healing presence of God known in our world by improving the health of the people we serve, especially those who are vulnerable, while we advance social justice for all.

CHNA Collaborators

CHI LakeWood Health contracted with the North Dakota State University Center for Social Research to conduct the CHNA. The Center for Social Research developed community profiles and developed/analyzed a community feedback survey that provided the foundation for this needs assessment. CHI LakeWood Health operates LakeWood Public Health, and these two entities collaborated on the CHNA.

Community Definition

CHI LakeWood Health is located in Baudette, Minnesota. The hospital primarily serves Lake of the Woods County, where Baudette is located and is the only hospital in Lake of the Woods County. Lake of the Woods County is considered the primary service area for this community health needs assessment. Lake of the Woods County is designated as a Health Professional Shortage Area (HPSA) and a low income Medically Underserved Area (MUA) by the United States Health Resources & Services Administration. Lake of the Woods County is a rural county located in northern Minnesota and has an estimated population of 3,786.

Assessment Process and Methods

Community health needs were assessed using secondary data from national and state sources and primary data gathered from community members during a two-month survey period. CHI LakeWood Health solicited input from community organizations representing health, education, law enforcement, victim advocacy, social services, and the medically underserved to review and validate community health needs at a community input meeting held January 15, 2025.

Multiple data sources with various indicators that inform social considerations were compiled and analyzed. Data sources included but are not limited to County Health Rankings, the American Community Survey (ACS), the Bureau of Economic Analysis (BEA), and the Centers for Disease Control and Surveillance (CDC). All community level data were compared to state and national data for context. Community member input was solicited via an online survey and a community input meeting.

The survey was administered using a QR code for public distribution using various online and print media and a survey link that was distributed by hospital personnel. Upon conclusion of the survey

fielding period, data were compiled and analyzed. Survey data were analyzed using widely accepted standard descriptive statistics, such as measures of mean, median, and frequencies. Priority needs were identified by identifying the greatest level of consensus among survey respondents.

CHI LakeWood Health solicited feedback on survey findings at a community input meeting on January 15, 2025. A presentation that summarized the community profile and highlighted key survey findings was used to report and validate priority needs identified in survey results, as well as guide discussion of needs and priorities for community health improvement planning.

Prioritized Significant Health Needs

Based on an analysis of survey data, several issues were identified with the greatest degree of consensus among survey respondents. Secondary data are provided in support of these findings.

- **Affordability and availability of community services.** A majority of respondents disagreed when asked about the adequacy of various services in their community. Two-thirds of respondents disagreed that their community has adequate access to affordable housing (66 percent) or adequate public transportation (67 percent). Furthermore, 62 percent of respondents disagreed that their community has adequate access to affordable healthy foods. More than half of respondents (56 percent) disagreed that their community has access to sufficient quality child care options and 57 percent disagreed that their community has a thriving business district. The affordability and availability of child care and housing were recognized as priority health needs during the previous CHNA conducted in 2022. More than half (53 percent) of respondents indicated that the availability of affordable housing since 2022 has not changed and 35 percent said that it has worsened. However, 43 percent of respondents indicated that access to child care has not changed, 30 percent said it has improved, and 27 percent said it has worsened. While the average home value, monthly housings costs, and monthly rent in the community are lower than statewide averages, median household income is substantially lower. In addition, the poverty rate is slightly higher than the statewide average (10.7 percent compared to 9.3 percent, respectively).
- **Suicide, mental health (anxiety, stress, depression), and substance misuse.** There was substantial consensus among respondents regarding the issues of suicide, mental health, and substance misuse in their community. All respondents had at least some level of concern for suicide and mental health in their community; 62 percent were very concerned about suicide and 60 percent were very concerned about mental health (anxiety, stress, depression). Ninety-eight percent of respondents were at least somewhat concerned about substance misuse; 55 percent were very concerned. Mental health was also recognized as an area of concern during the previous CHNA conducted in 2022. Although half (49 percent) of respondents indicated that the issue has not changed since 2022, 31 percent indicated that it has improved and 20 percent indicated that it has worsened. Thirty-six percent of respondents disagreed when asked if the community has adequate mental health care services — and the ratio of residents to mental health care providers in the community (3,870:1) is substantially higher (worse) than the ratio statewide (300:1) and nationally (320:1).
- **Elder care services, assisted living, and long-term care.** There was a substantial level of consensus among respondents regarding services and needs associated with senior services. Ninety-five percent of respondents were at least somewhat concerned about the availability of services to support seniors; 59 percent were very concerned. Lake of the Woods County has a

higher percentage of households with adults 65 and older and householders age 65 and older living alone than Minnesota and the nation, on average.

- Access to health care services.** Nearly all (94 percent) respondents disagreed that their community has adequate access to dental care and vision care (86 percent). Respondents were fairly evenly split on the adequacy of health care services and primary health care providers and nurses; 42 percent of respondents disagreed their community has adequate health care services and 49 percent disagreed their community has adequate primary care providers and nurses. A lack of health care providers was identified as a priority health need in the previous CHNA in 2022. When asked about change since 2022, 48 percent of respondents indicated that the availability of health care providers has improved, 31 percent said no change, and 20 percent indicated availability has worsened. The ratio of residents to primary care physicians is higher (worse) in Lake of the Woods County (3,820:1) than in Minnesota (1,130:1) and the nation (1,330:1). In addition, the ratio of residents to dentists is higher (worse) in Lake of the Woods County (3,870:1) than in Minnesota (1,290:1) and the nation (1,360:1).
- Barriers to health care.** More than half of respondents indicated that the availability of local health care services, the distance to access care, the price of health care, the length of time it takes to see a provider, the price of prescription drugs (even with insurance), and transportation were at least somewhat of a barrier to accessing health care in their community. More than half (53 percent) of respondents indicated that the availability of local health care services posed somewhat of a barrier to accessing medical care and 29 percent indicated that it was an extreme barrier. Forty percent of respondents indicated distance to access care was at least somewhat of a barrier and 37 percent said it was an extreme barrier. The median household income in the community is substantially lower (\$61,667) than Minnesota (\$84,313) and the nation (\$75,149). Further, the percentage of residents with Medicaid coverage is higher in Lake of the Woods County (25.7 percent) compared to Minnesota (17.8 percent) and the nation (20.4 percent).

CHI LakeWood Health representatives convened a community meeting on January 15, 2025 to review the survey's prioritized health needs and to solicit additional input from community members. At this meeting, the community voted to prioritize the following:

- 1. Access to Health Care Services: Dental/Vision**
- 2. Substance Abuse**
- 3. Mental Health**

CHI LakeWood Health representatives agreed to adopt these prioritized health needs and to develop strategies and an action plan to address them. Other needs were not prioritized due to available expertise and availability of resources.

Resources Potentially Available

Programs, organizations, and facilities in the community that are potentially available to address significant health needs were identified by key informants giving input to this process. While not exhaustive, this list — which includes dozens of potential resources — draws on the experiences and knowledge base of those directly serving the community. A list of community resources can be found in a separate resource section later in the report.

Report Adoption, Availability, and Comments

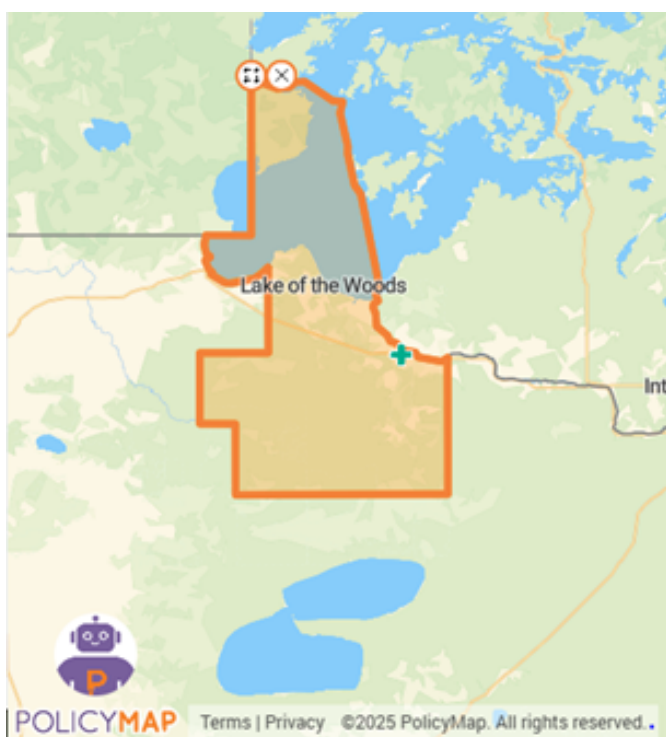
This CHNA report was adopted by the CHI LakeWood Health Board of Directors in May 2025. The report is widely available to the public on the hospital's website, and a paper copy is available for inspection upon request at the Administration Office of CHI LakeWood Health. Written comments on this report can be submitted via mail to CHI Health – The McAuley Fogelstrom Center, (12809 W Dodge Rd., Omaha, NE 68154 attn. Healthy Communities); electronically at:

<https://forms.gle/KGRq62swNdQyAehX8>; or by calling Ashley Carroll, Market Director, Community and Population Health, at: (402) 343-4548.

Community Definition

CHI LakeWood Health is located in Baudette, Minnesota. The hospital primarily serves Lake of the Woods County where Baudette is located and is the only hospital in Lake of the Woods County. Lake of the Woods County is considered the primary service area for this community health needs assessment. Lake of the Woods County is designated as a Health Professional Shortage Area (HPSA) and a low income Medically Underserved Area (MUA) by the United States Health Resources & Services Administration. Lake of the Woods County is a rural county located in northern Minnesota and has an estimated population of 3,786.

Figure A: CHI LakeWood Health Community Health Needs Assessment Service Area



The following zip code is where 80 percent of patient admissions to CHI LakeWood Health reside: 56623.

Core demographics are summarized in Table 1.

Table 1. Core Demographic Summary, Lake of the Woods County, Minnesota	
Measure	Lake of the Woods, MN
Community Description	Rural
Population	3,786
<i>Racial and Ethnic Distribution</i>	
White, non-Hispanic	91.6%
American Indian and Alaska Native	2.1%
Black or African American alone	0.4%
Asian or Pacific Islander alone	0.1%
Some other race	0.2%
Two or more races	5.6%
Hispanic Origin (of any race)	0.5%
Median Household Income	\$61,667
Percent of Persons below Poverty Rate	10.7%
Unemployment Rate	3.2%
Percent Population with less than High School Diploma	4.0%
Percent of People 5 and Older who are Non-English Speaking	0.0%
Percent of People without Health Insurance	6.0%
Percent of People with Medicaid	25.7%
Health Professional Shortage Area	Yes
Medically Underserved Area	Yes
Number of Hospitals in the County	1 (CHI LakeWood Health)

Hospital Description

CHI LakeWood Health was originally established as Baudette Community Hospital in 1950 and was owned by the community and operated by the Sisters of St. Joseph. In 1957, the Sisters purchased the hospital and renamed it Trinity Hospital.

Throughout the 1980s, the hospital underwent changes in management, from a management contract with United Health Resources followed by a sale to Franciscan Sisters Health Care. During this time, Trinity Hospital assumed management of the Pioneer Nursing Home, a long-term care facility. In 1990, the hospital acquired the Pioneer Nursing Home and the name was changed to LakeWood Health Center to reflect the integration of acute care, long-term care, and home health/public health services.

In 1993, Catholic Health Corporation of Omaha took over sponsorship of LakeWood Health Center. Two years later, they merged with other Catholic health care systems to form Catholic Health Initiatives (CHI). In 2019, CHI merged with Dignity Health to form CommonSpirit Health, the current sponsor of CHI LakeWood Health.

A major building and renovation project in 2000 brought all health care services together on one campus, enhancing accessibility and convenience for patients. CHI LakeWood Health is a 15-bed acute care critical access hospital, offering a comprehensive range of services, including medical, surgical, emergency room, outpatient, critical care, swing beds, transitional beds, and respite care.

The hospital has a multi-disciplinary staff, including family practice physicians, nurse practitioners, nurses, a pharmacist, emergency medical technicians, physical therapists, occupational therapists, social workers, a dietitian, and many others, all dedicated to providing the highest level of care to each patient.

Assessment Process and Methods

Community health needs were assessed using secondary data from national and state sources and primary data gathered from community members during a two-month survey period. CHI LakeWood Health representatives solicited input to prioritize identified needs at a community meeting held January 15, 2025.

Secondary data: community profiles

Community profiles are an integral part of assessing community health needs. To get a complete sense of the community multiple data sources with various indicators that inform social considerations were compiled and analyzed. Data sources include but are not limited to County Health Rankings, the American Community Survey (ACS), the Bureau of Economic Analysis (BEA), and the Centers for Disease Control and Surveillance (CDC). All community level data were compared to state and national data for context.

Primary data: health needs survey and community discussion

To help supplement secondary data sources, community member input was solicited via an online survey and a community input meeting. The online survey was administered using the Qualtrics online survey platform from August 12 to October 16, 2024. The survey was administered using a QR code for public distribution using various online and print media and a survey link that was distributed by hospital personnel. The survey tool can be found in Appendix B.

The survey solicited feedback on respondents' perceptions of various issues and topics in six broad categories: people in my community, services in my community, concerns in my community, concerns about violence, medical services, and barriers to care. Survey data were analyzed using widely accepted standard descriptive statistics, such as measures of mean, median, and frequencies. Priority needs were identified by identifying issues with the greatest level of consensus among survey respondents. Survey findings are detailed later in this assessment. The questionnaire can be found in Appendix B and detailed results in Appendix C.

Community Input

CHI LakeWood Health solicited feedback on survey findings at a community input meeting held January 15, 2025. A presentation that summarized the community profile and highlighted key survey findings was used to report and validate priority needs identified in survey results, as well as guide discussion of needs and priorities for community health improvement planning. During the community input meeting, attendees discussed survey findings, whether the survey findings aligned with their perceptions of their communities' needs, and the demographics of survey respondents. There were 20 attendees, including community members, first responders, and representatives from:

- Sheriff's Office
- Public Schools
- Local foundation board
- A medical center
- Lake of the Woods Prevention Coalition
- Social Services
- Public health
- Local churches

CHI LakeWood Health contracted with the North Dakota State University Center for Social Research to conduct the CHNA. The Center for Social Research developed community profiles and developed and conducted a community feedback survey that provided the foundation for this needs assessment. CHI LakeWood Health operates LakeWood Public Health and these two entities collaborated on the CHNA.

The hospital invited written comments on the most recent CHNA report and Implementation Strategy both in the documents and on the website where they are widely available to the public. No written comments have been received.

Assessment Data and Findings

The following sections provide a detailed community profile and survey results.

Community Profile

Lake of the Woods County is a rural county in northern Minnesota. The county seat and largest city is Baudette. With 3,786 residents, Lake of the Woods County is Minnesota's 2nd least populous county. It is home to proportionally more adults aged 65 and older than Minnesota and the United States as a whole, and proportionally fewer children. Like most of rural Minnesota, Lake of the Woods County's racial composition is largely white. The median household income and median home value are lower in Lake of the Woods County than they are in Minnesota and the nation overall, but so are the costs associated with home rental and ownership. Lake of the Woods County has higher than average percentages of householders living alone and households with residents aged 65 and older when compared to Minnesota. The poverty rate in Lake of the Woods County is higher than the statewide average but lower than the national average.

Lake of the Woods County has a higher rate of adult smoking and adult obesity than Minnesota and the United States as a whole. The adult excessive drinking rate in Lake of the Woods County is lower than in Minnesota, but on par with the national average. The leading causes of death in 2021 for Lake of the Woods County were malignant neoplasms and diseases of the heart. Lake of the Woods County has a much lower annual flu shot rate than both Minnesota and the nation overall. The ratio of population to primary care physicians, mental health care providers, and dentists in Lake of the Woods County is substantially higher than Minnesota and the nation overall.

Lake of the Woods County faces relatively moderate risk of loss due to winter weather. However, Lake of the Woods County's overall risk due to natural hazards is very low. Lake of the Woods County's social vulnerability is rated as very low and its community resilience is rated as very high. These factors combined give Lake of the Woods County a relatively low National Risk Index Score; which is worse than most Minnesota counties but better than most counties nationally.

Community Demographics

The American Community Survey's (ACS) most recent five-year estimate of Lake of the Woods County's population is 3,786, making it the state's 2nd least populous county. About 1 in 5 residents in Lake of the Woods County are under the age of 18 and 1 in 4 are aged 65 and older (Table 2). The county's racial composition is largely non-Hispanic white (91.6 percent). The county's gender split is skewed male; 53.3 percent male and 46.7 percent female.

Table 2: Population Estimates, Lake of the Woods County, Minnesota, and the United States, by Age, Race/Ethnicity, and Sex (2022)

Age Group	Lake of the Woods County Population	Lake of the Woods County Percentages	Minnesota Percentages	United States Percentages
0-4	208	5.5%	6.0%	5.7%
5-17	494	13.0%	17.0%	16.4%
18-24	178	4.7%	9.0%	9.4%
25-44	852	22.5%	26.4%	26.6%
45-64	1,103	29.1%	25.1%	25.3%
65 and older	951	25.1%	16.5%	16.5%
Total	3,786	100.0%	100.0%	100.0%
Race and Ethnicity*				
White, non-Hispanic alone	3,468	91.6%	77.7%	58.9%
American Indian and Alaska Native	81	2.1%	0.9%	0.8%
Black or African American alone	15	0.4%	6.7%	12.5%
Asian or Pacific Islander alone	4	0.1%	5.0%	6.0%
Some other race alone	7	0.2%	2.3%	6.0%
Two or more races	211	5.6%	5.3%	8.8%
Hispanic Origin (of any race)	19	0.5%	5.7%	18.7%
Sex				
Female	1,768	46.7%	49.8%	50.4%
Male	2,018	53.3%	50.2%	49.6%
Total	3,786	100.0%	100.0%	100.0%

*Overlapping racial/ethnic categories mean that the percentages will not total to 100% of the population.

Source: U.S. Census Bureau, 2018-2022 American Community Survey (ACS) 5-year estimates.

Estimates from the ACS indicate that there are 1,632 households in Lake of the Woods County with an average of 2.3 persons per household. Median household income is \$61,667, which is substantially lower than the median household income in Minnesota and the nation (\$84,313 and \$75,149, respectively) (Table 3). Approximately 83 percent of households in Lake of the Woods County are owner-occupied and the median owner costs are \$1,403 per month including the mortgage. Median rent in Lake of the Woods County is \$821 per month. Both median owner costs and median rent are lower in Lake of the Woods County than in Minnesota and the United States overall. About 1 in 3 households in Lake of the Woods County are occupied by householders living alone. A substantially lower percentage of households in Lake of the Woods County have children in residence (16.5 percent) than Minnesota (29.4 percent) and the nation (30.2 percent) (Table 4). The percentage of householders living alone, households with residents aged 65 and older, and householders aged 65 and older living alone are higher in Lake of the Woods County than in Minnesota and the nation overall.

Table 3: Household Demographics, Lake of the Woods County, Minnesota, and the United States (2022)

Item	Lake of the Woods	Minnesota	United States
Total households	1,632	2,256,126	125,736,353
Owner-occupied housing rate	82.7%	72.3%	64.8%
Average household size (persons per household)	2.3	2.5	2.6
Median value of owned-occupied housing	\$204,300	\$286,800	\$281,900
Median monthly owner costs (with mortgage)	\$1,403	\$1,818	\$1,828
Median monthly owner costs (without mortgage)	\$568	\$639	\$584
Median gross rent	\$821	\$1,178	\$1,268
Median household income	\$61,667	\$84,313	\$75,149
Source: U.S. Census Bureau, 2018-2022 American Community Survey (ACS) 5-year estimates.			

Table 4: Household Characteristics, Lake of the Woods County, Minnesota, and the United States (2022)

Household Characteristics	Lake of the Woods Households	Percent of Lake of the Woods Households*	Percent of Minnesota Households*	Percent of United States Households*
Households with children 0-17	269	16.5%	29.4%	30.2%
Households with adults 65+	665	40.7%	29.0%	30.8%
Householders living alone	536	32.8%	29.1%	28.3%
Householders aged 65 and older living alone	262	16.1%	11.8%	11.5%
*Overlapping household characteristics mean that the percentages of households will not total to 100% of the total number of households.				
Source: U.S. Census Bureau, 2018-2022 American Community Survey (ACS) 5-year estimates.				

Estimates from the ACS indicate that there are 1,942 adults in the workforce in Lake of the Woods County. The largest industries in the county by percentage of the workforce employed are manufacturing; educational services, health care, and social assistance; and retail, which account for 26.8 percent, 17.6 percent, and 10.7 percent, respectively (Table 5). Other industries that employ substantial percentages of the county's workforce include arts, entertainment, recreation, and accommodation and food service; transportation, warehousing, and utilities; and public administration.

Table 5: Employment by Industry, Lake of the Woods County, MN (2022)

Sector	Estimated Workers	Percent of Workforce
Manufacturing	520	26.8%
Educational services, health care and social assistance	341	17.6%
Retail	208	10.7%
Arts, entertainment, recreation, accommodation, food service	172	8.9%
Transportation, warehousing, and utilities	119	6.1%
Public administration	116	6.0%
Other	466	24.0%
Total workforce	1,942	100.0%
Source: U.S. Census Bureau, 2018-2022 American Community Survey (ACS) 5-year estimates.		

The poverty rate in Lake of the Woods County is 10.7 percent, which is higher than the poverty rate in Minnesota overall (9.3 percent) but lower than the poverty rate nationally (12.5 percent) (Table 6). About 1 in 5 children (19.1 percent) in Lake of the Woods County live below the poverty line compared to 10.9 percent statewide and 16.7 percent nationally. Roughly 1 in 5 (21.8 percent) school-aged children in Lake of the Woods County are eligible for free or reduced-price school lunch, which is lower than Minnesota overall (31.6 percent) and the national average (53.3 percent).

Table 6: Poverty Characteristics, Lake of the Woods County, Minnesota, and the United States (2022)

Poverty Characteristics	Lake of the Woods Estimate	Lake of the Woods Percent*	Minnesota Percent*	United States Percent*
All persons below poverty level (% of total population)	399	10.7%	9.3%	12.5%
All persons below 200% poverty level (% of total population)	1,192	31.9%	22.4%	28.8%
Children aged 0-17 below poverty level (% of children 0-17)	134	19.1%	10.9%	16.7%
Adults aged 65+ below poverty level (% of adults 65 and older)	79	8.7%	7.9%	10.0%
Eligible recipients of free or reduced-price school lunch	105	21.8%	31.6%	53.3%

*Differing populations and overlapping categories mean that percentages will not total to 100%.

Sources: U.S. Census Bureau, 2018-2022 American Community Survey (ACS) 5-year estimates; Minnesota Department of Public Instruction; National Center for Education Statistics, Digest of Education Statistics

Most residents in Lake of the Woods County aged 25 and older (63.8 percent) have at least some college experience; 21.2 percent have attained a bachelor's degree or higher. This is lower than in Minnesota and the nation where 38.2 percent and 34.3 percent of the population aged 25 and older, respectively, have at least a bachelor's degree. Fewer than 1 in 10 residents aged 25 and older in Lake of the Woods County did not complete high school (4.0 percent), which is lower than Minnesota (6.3 percent) and the nation overall (10.9 percent) (Table 7).

Table 7: Educational Attainment for Persons Aged 25 and Older, Lake of the Woods County, Minnesota, and the United States (2022)

Level of Education Attained	Lake of the Woods Estimate	Lake of the Woods Percent of Population 25+	Minnesota Percent of Population 25+	United States Percent of Population 25+
Less than high school	116	4.0%	6.3%	10.9%
High school diploma or GED	934	32.1%	23.7%	26.4%
Some college or Associate's degree	1,239	42.6%	31.8%	28.5%
Bachelor's degree	466	16.0%	24.9%	20.9%
Graduate or professional degree	151	5.2%	13.3%	13.4%
<i>Total population aged 25 and older</i>	<i>2,906</i>	<i>100.0%</i>	<i>100.0%</i>	<i>100.0%</i>

Source: U.S. Census Bureau, 2018-2022 American Community Survey (ACS) 5-year estimates.

Community Health Factors and Outcomes

Lake of the Woods County has a higher prevalence of adult cigarette smokers than Minnesota or the nation on average; 18 percent of adult residents in Lake of the Woods County smoke cigarettes

compared to 14 percent of Minnesotans and 15 percent of Americans overall (Table 8). The adult obesity rate in Lake of the Woods County (38 percent) is also higher than Minnesota (32 percent) and the nation (34 percent). Adults in Lake of the Woods County were slightly more likely to report a lack of physical activity outside of work (22 percent) than Minnesota (20 percent), but slightly less likely than Americans overall (23 percent). Although the percentage of adults who reportedly engage in excessive drinking is slightly lower in Lake of the Woods County than it is in Minnesota (18 percent compared to 21 percent), it is on par with the nationwide average (18 percent). The prevalence of Lake of the Woods County residents reporting poor mental health days in the past month is slightly higher than it is statewide (4.6 days compared to 4.3 days, respectively), but slightly lower than the national average (4.8 days).

Table 8: Health Behaviors, Lake of the Woods County, Minnesota, and the United States (2021)

Health Behavior	Lake of the Woods	Minnesota	United States
Adult Smoking	18%	14%	15%
Adult Obesity	38%	32%	34%
Adult Excessive Drinking	18%	21%	18%
Alcohol-Impaired Driving Deaths	33%	30%	26%
Physical Inactivity ¹	22%	20%	23%
Access to Exercise Opportunities ²	56%	86%	84%
Poor Mental Health Days ³	4.6	4.3	4.8

Source: 2024 County Health Rankings & Roadmaps, a program of the University of Wisconsin Population Health Institute.

¹Physical Inactivity refers to the percent of adults who report participating in no physical activity outside of work.

²Access to Exercise Opportunities refers to the percent of adults who report living close to a park or recreation facility.

³The average number of self-reported mentally unhealthy days in the past 30 days.

Leading causes of death for residents under age 75 in Lake of the Woods County were malignant neoplasms and diseases of the heart (Table 9). Life expectancy in Lake of the Woods County is 78.9 years, which is lower than life expectancy in Minnesota overall (79.7 years) but higher than the national average (77.6 years) (County Health Rankings & Roadmaps 2024).

Table 9: Leading Causes of Death in Lake of the Woods County, MN Residents Under Age 75 (2019-2021)

Cause of Death	Deaths	Rate Per 100,000 Population Under 75
Malignant Neoplasms	14	Unreliable
Diseases of the heart	13	Unreliable

Source: CDC Wonder, using data collected from 2019 through 2021.

Crude rates per 100,000 population under 75 are unreliable due to the small number of deaths.

The rate of people under age 65 without health insurance in Lake of the Woods County is similar to the statewide rate and lower than the national average. In Lake of the Woods County, 6 percent of people under the age of 65 did not have health insurance compared with 5 percent of all Minnesotans and 10 percent nationally (Table 10).

The flu vaccination rate in Lake of the Woods County is much lower than the statewide and national averages. The annual flu shot rate in Lake of the Woods County is 26 percent, which is 27 percentage points lower than the statewide rate (53 percent) and 20 percentage points lower than the national rate (46 percent).

The Food Environment Index is a measure of food security and access to healthy foods with a ranking system ranging from 0 (worst) to 10 (best). Lake of the Woods County's Food Environment Index

score was 8.3, which is lower than Minnesota's score of 9.1 but higher than the national score of 7.7 (Table 10).

Table 10: Other Health Factors, Lake of the Woods County, Minnesota, and the United States			
Description of Factor	Lake of the Woods County	Minnesota	United States
Uninsured Rate, 2021	6%	5%	10%
Medicaid Coverage, 2022	25.7%	17.8%	20.4%
Unemployment Rate, 2022	3.2%	2.7%	3.7%
Low Birthweight Rate, 2016-2022	6%	7%	8%
Annual Mammogram Rate, 2021 ¹	47%	52%	43%
Annual Flu Shot Rate, 2021 ²	26%	53%	46%
Food Environment Index, 2019-2021 ³	8.3	9.1	7.7
Sources: US Census Bureau's Small Area Health Insurance Estimates (SAHIE) program, 2021; The Local Area Unemployment Statistics (LAUS) program of the Bureau of Labor Statistics, 2022; Map the Meal Gap, Feeding America, 2021; The Centers for Medicare & Medicaid Services Office of Minority Health's Mapping Medicare Disparities (MMD) Tool, 2021 ¹ Percentage of female Medicare enrollees who received an annual mammogram. ² Percent of Medicare enrollees who received an annual flu shot. ³ The Food Environment Index is a measure of food environment that combines food insecurity rates with rates of access to healthy foods. It is scored on a scale from 0 (worst) to 10 (best).			

The ratio of residents to health care providers in Lake of the Woods County is substantially higher than the ratio of residents to providers statewide and nationally. The ratio of Lake of the Woods County residents to primary care physicians is 3,820:1 compared to a ratio of 1,130:1 in Minnesota and 1,330:1 nationally. The ratio of residents to mental health care providers and dentists is also higher in Lake of the Woods County than statewide and nationally (Table 11).

Table 11: Number of Residents Per Health Care Provider in Lake of the Woods County, MN, and the United States			
Type of Provider	Lake of the Woods	Minnesota	United States
Primary Care Physicians, 2021	3,820:1	1,130:1	1,330:1
Mental Health Care Providers, 2024	3,780:1	280:1	300:1
Dentists, 2022	3,870:1	1,290:1	1,360:1
Sources: Health Resources & Services Administration, Area Health Resource Files; CMS, National Provider Identification Registry.			

National Risk Index

The Federal Emergency Management Agency (FEMA) administers the National Risk Index, a dataset and tool that estimates the risk level for natural disasters at the county level. A county's Risk Index is calculated using three metrics: Expected Annual Loss, Social Vulnerability, and Community Resilience. A community's exposure to and ability to cope with hazardous conditions can have a substantial impact on factors that inform community health outcomes, such as the strain on that community's health care system and its ability to make sure that residents have access to essential goods and services in times of crisis.

Overall, Lake of the Woods County's National Risk Index rating is Very Low. This indicates a strong general preparedness for and ability to recover from natural and manmade hazards. Only 4.6 percent of Minnesota counties have a lower National Risk Index score than Lake of the Woods County, and only 2.4 percent of counties nationally have a lower score (Table 12).

Table 12: National Risk Index Percentiles for Lake of the Woods County, MN when compared to Minnesota Counties and U.S. Counties (2024)

Index	Percentile within Minnesota	U.S. Percentile
Expected Annual Loss	4.6	4.0
Social Vulnerability	14.9	7.2
Community Resilience	86.2	98.6
<i>National Risk Index</i>	<i>4.6</i>	<i>2.4</i>

Note: The Risk Index can be read as “4.6% of counties in Minnesota have a lower Risk Index than Lake of the Woods County; 2.4% of U.S. counties have a lower Risk Index than Lake of the Woods County.”

Sources: FEMA, National Risk Index; CDC/ATSDR Social Vulnerability Index 2022; University of South Carolina's Hazards and Vulnerability Research Institute (HVRI)'s Baseline Resilience Indicators for Communities (HVRI BRIC).

Expected Annual Loss

Expected Annual Loss scores are calculated by combining a community’s exposure to natural hazards, annualized frequency of hazards, and the historic loss ratio for various natural hazards. Lake of the Woods County’s overall Expected Annual Loss is rated as Very Low overall on a five-point scale: Very Low, Relatively Low, Relatively Moderate, Relatively High, and Very High (NRI 2024). However, the county faces Relatively Moderate winter weather hazards and Relatively Moderate expected annual loss due to winter weather. Lake of the Woods County’s expected annual loss is higher than 4.6 percent of Minnesota counties and 4.0 percent of counties nationally.

Social Vulnerability Index

Social vulnerability is a concept related to a community’s ability to prepare for and respond to hazardous events. A community’s social vulnerability is gauged using the Social Vulnerability Index (SVI) (ATSDR) (CDC, 2024): an aggregated index of 16 socioeconomic factors categorized into four themes: socioeconomic status, household characteristics, racial and ethnic minority status, and housing type/transportation. SVI is a nationally recognized measure of a location’s social vulnerability, and therefore its ability to prepare for and respond to disasters. While the SVI technically is a measure of ability to respond to natural disasters and aid emergency planning, the index is an accepted tool to gauge overall community socioeconomic well-being. A higher SVI indicates a higher vulnerability to hazard.

Lake of the Woods County’s Social Vulnerability is rated Very Low. Lake of the Woods County has higher social vulnerability than 14.9 percent of Minnesota counties and only 7.2 percent of counties nationally. For a more thorough breakdown of Lake of the Woods County’s Social Vulnerability see Appendix A.

Community Resilience

A community’s Community Resilience score is defined as its ability to prepare for, withstand, and recover from hazardous events (Cutter et al. 2014). Categories considered in the compilation of BRIC scores include Human Well-Being, Economy, Infrastructure, Governance, Community Capacity, and Environment. Lake of the Woods County’s Community Resilience ranking is Very High. Lake of the Woods County has higher community resilience than 86.2 percent of Minnesota counties and 98.6 percent of counties nationally. Community resilience indicators suggest the county is well-prepared to respond to hazardous events.

Community Health Survey Analysis

The survey solicited feedback on respondents' perceptions of various issues and topics in six broad categories: people in my community, services in my community, concerns in my community, concerns about violence, medical services, and barriers to care. Survey data were analyzed using widely accepted standard descriptive statistics, such as measures of mean, median, and frequencies. Priority needs were identified by identifying the greatest level of consensus among survey respondents. Detailed survey findings can be found in Appendix C.

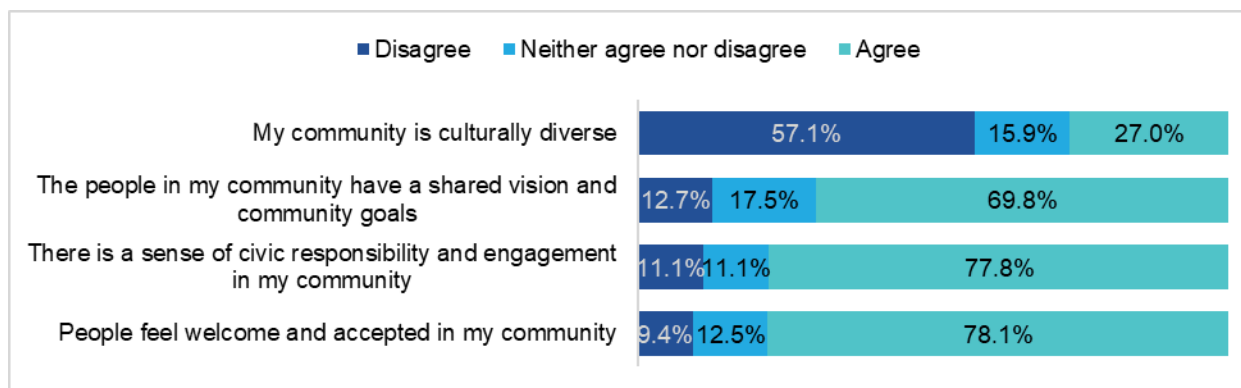
Demographics

There were 65 respondents to the CHI LakeWood Community Health Needs Assessment. The mean age of respondents was 54 years with nearly half (47 percent) of respondents ages 45 to 64. Eighty-nine percent of respondents were female and 92 percent identified as white. More than half (53 percent) of respondents had a bachelor's or graduate degree and 34 percent reported an annual household income of \$100,000 or more. Sixty-two percent of respondents were employed full time, 22 percent were retired, and 16 percent were employed part time.

Findings

Respondents generally were positive about the people in their community; 78 percent of respondents agreed people feel welcome and accepted in their community, 78 percent agreed there is a sense of civic responsibility and engagement in their community, and 70 percent agreed the people in their community have a shared vision and community goals. However, 57 percent disagreed their community is culturally diverse (Figure 1).

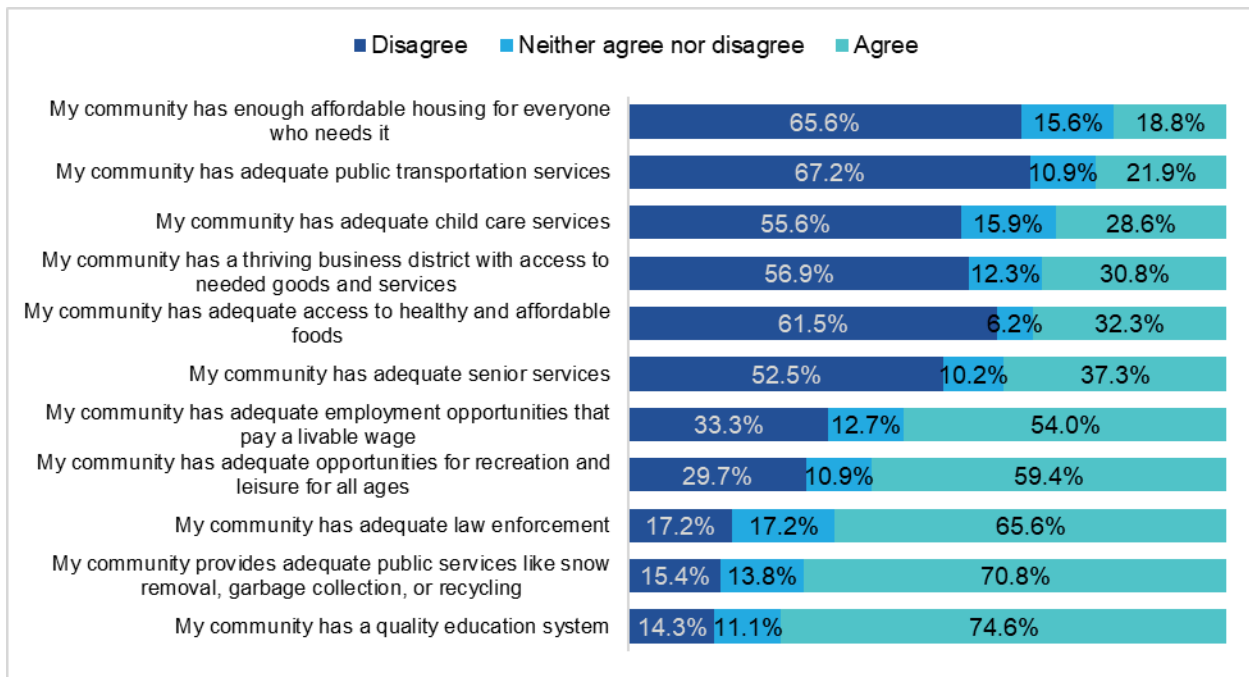
Figure 1: People in My Community, Community Health Needs Assessment, 2024



Respondent n: 63-64.

Three-quarters (75 percent) of respondents agreed their community has a quality education system and 71 percent agreed that their community provides adequate public services (such as snow removal); however, many other community services were not deemed adequate by the majority of respondents. Two-thirds (67 percent) of respondents disagreed their community has adequate public transportation services and 66 percent disagreed their community has adequate affordable housing (Figure 2).

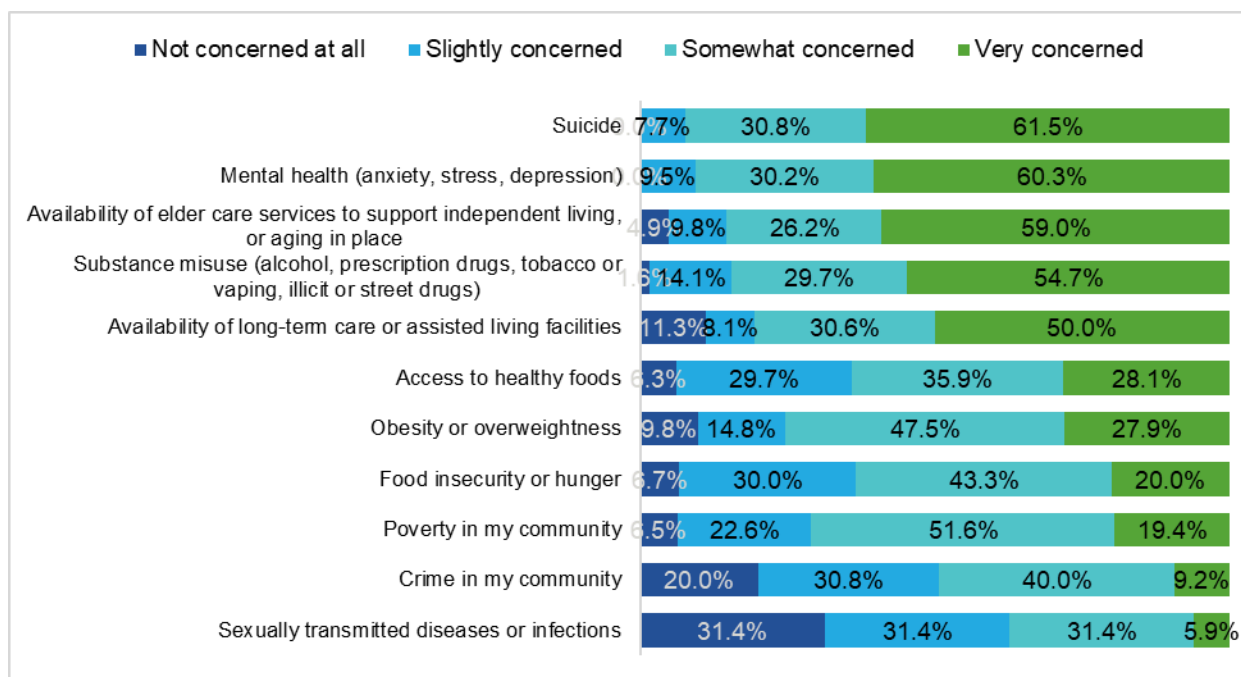
Figure 2: Services in My Community, Community Health Needs Assessment, 2024



Respondent n: 59-65.

All respondents had at least some level of concern for suicide and mental health in their community; 62 percent were very concerned about suicide and 60 percent were very concerned about mental health (anxiety, stress, depression) issues. Substance misuse was very concerning for 55 percent of respondents and the availability of elder care services to support independent living was very concerning for 59 percent of respondents. While 11 percent of respondents were not concerned at all about the availability of long-term care facilities, half (50 percent) of respondents were very concerned about this issue. Respondents were largely split on the issue of sexually transmitted diseases or infections (STIs); 31 percent of respondents were not concerned at all, 31 percent were slightly concerned, and 31 percent were somewhat concerned. Six percent were very concerned about STIs (Figure 3).

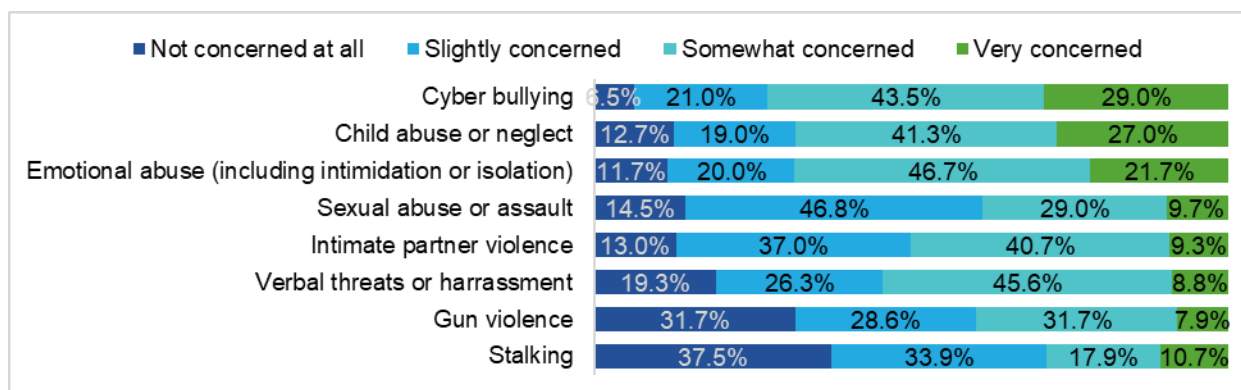
Figure 3: Concerns in My Community, Community Health Needs Assessment, 2024



Respondent n: 51-65.

Most respondents (93 percent) were at least slightly concerned about cyber bullying; 29 percent were very concerned about this issue. Likewise, 27 percent of respondents were very concerned about child abuse or neglect. Twenty-two percent were very concerned about emotional abuse (including isolation or intimidation). More than one-third (38 percent) of respondents was not concerned at all about stalking and 32 percent were not concerned at all about gun violence (Figure 4).

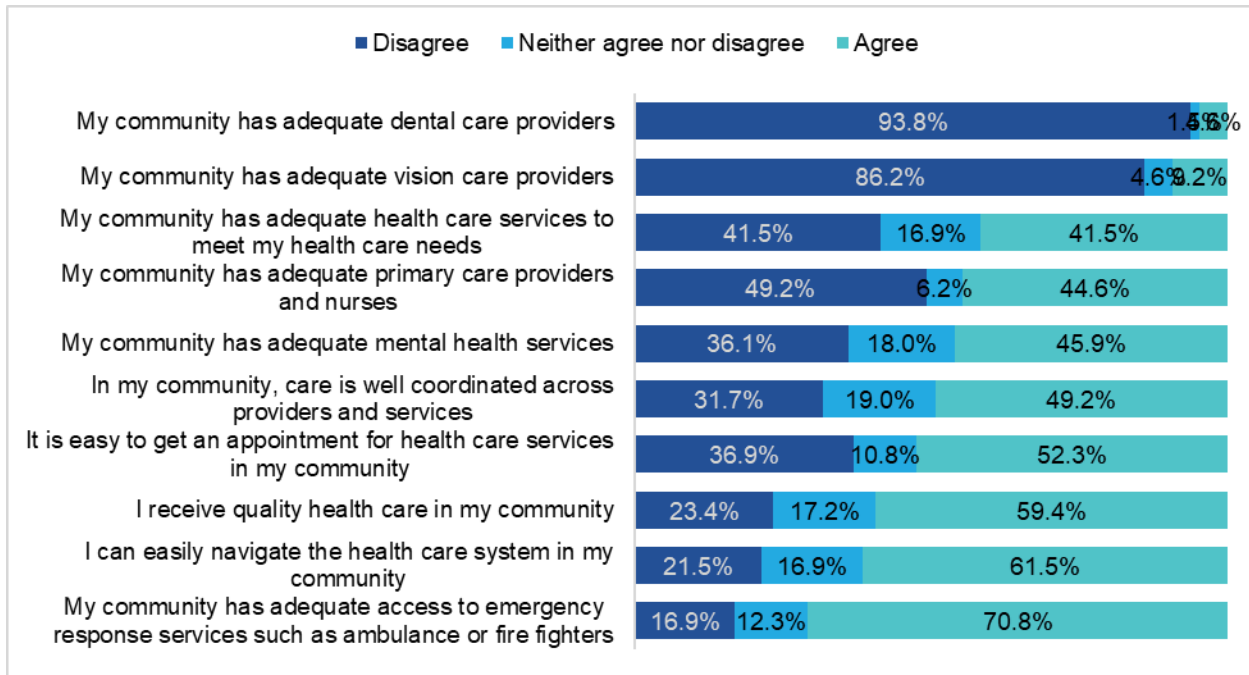
Figure 4: Violence Concerns in My Community, Community Health Needs Assessment, 2024



Respondent n: 54-63.

Respondents were clear in their opinion of community dental care provision; 94 percent disagreed their community has adequate dental care providers. Similarly, 86 percent of respondents disagreed their community has adequate vision care providers. However, 71 percent of respondents agreed their community has adequate access to emergency response services (such as ambulance) and 62 percent agreed they can easily navigate the health care system in their community (Figure 5).

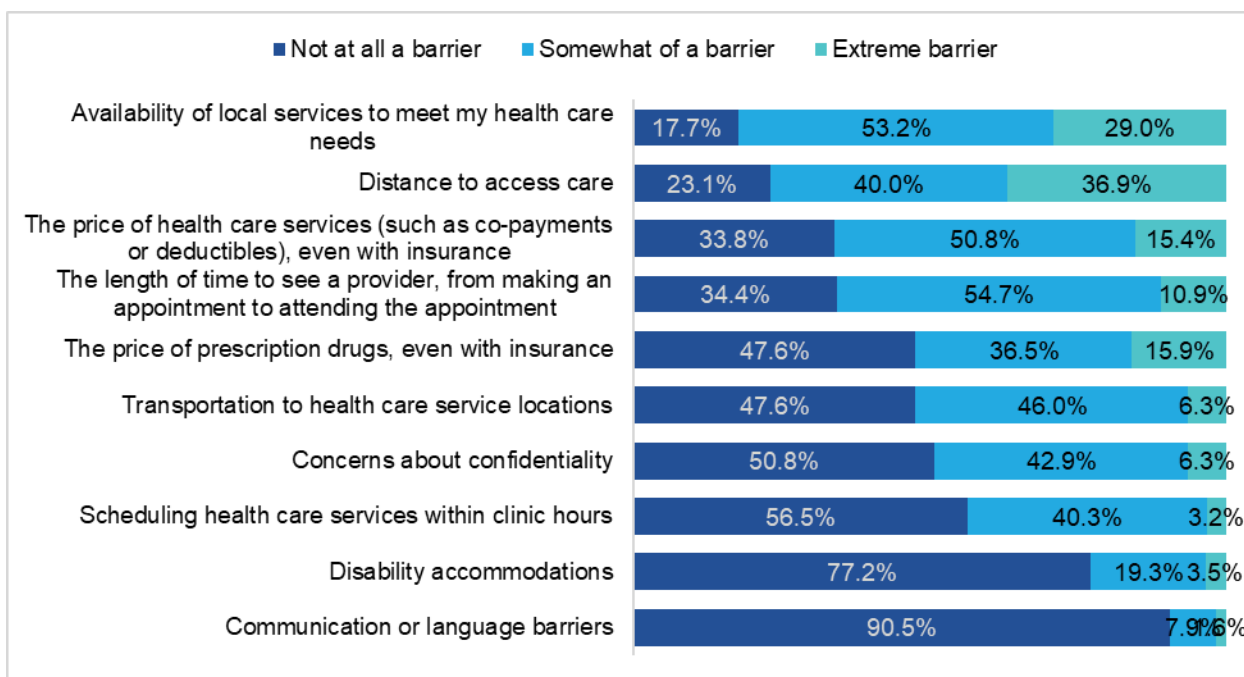
Figure 5: Medical Services in My Community, Community Health Needs Assessment, 2024



Respondent n: 61-65.

When asked about barriers to accessing health care, most respondents (91 percent) indicated communication or language barriers were not at all a barrier. However, the availability of local services presented at least somewhat of a barrier for 82 percent of respondents; 29 percent considered this issue an extreme barrier to accessing care. Likewise, 77 percent of respondents considered the distance to access care at least somewhat of a barrier; 37 percent considered this an extreme barrier (Figure 6).

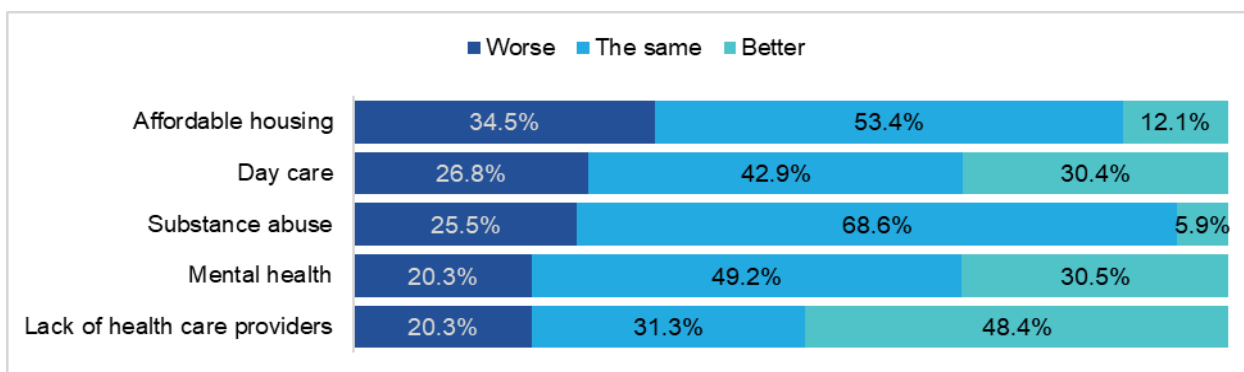
Figure 6: Barriers to Accessing Health Care, Community Health Needs Assessment, 2024



Respondent n: 57-65.

Respondents were asked about their perceptions of issues identified in the previous CHNA conducted in 2022. Nearly half (48 percent) of respondents thought that the lack of health care providers has become better since 2022 and 31 percent thought it was about the same. Conversely, 49 percent of respondents indicated that mental health in their community was about the same and 31 percent thought it has become better. More than two-thirds (69 percent) of respondents thought substance misuse was about the same and 26 percent said it has worsened. Respondents were split on day care in their community; although 30 percent thought it has improved, 27 percent thought it has worsened, and 43 percent thought day care was about the same as in 2022. Thirty-five percent of respondents thought affordable housing has worsened since 2022, which is congruent with the disagreement about adequate affordable housing - another 53 percent indicated this issue was unchanged from 2022 and 12 percent thought it improved (Figure 7).

Figure 7: Previous CHNA Issues, Community Health Needs Assessment, 2024



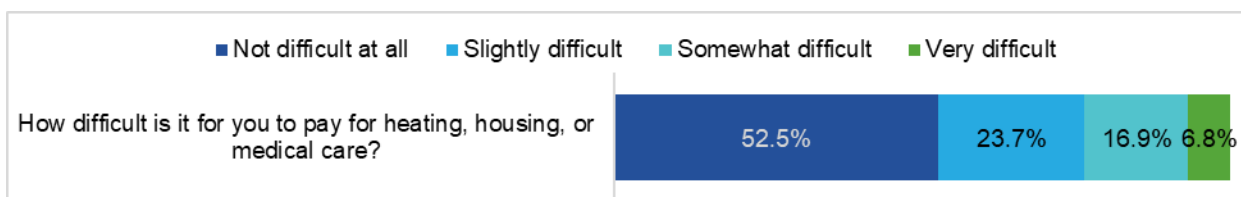
Respondent n: 51-64.

Most respondents (79 percent) had received an annual physical exam in the past 12 months and 71 percent had a dental exam in that time. Sixty-four percent had a vaccination, 60 percent had a mammogram, 60 percent had a blood pressure or cholesterol screening, and 59 percent had a vision exam in the past 12 months (data not shown).

Ninety-two percent of respondents said they had a primary care doctor and 79 percent of respondents said they obtain health information from their primary care provider. Seventy percent said they obtain health information from internet sources and 44 percent cited other health care professionals as a source of health information. Two thirds (67 percent) of respondents had insurance through an employer and one third (34 percent) had insurance through a government program such as Medicaid (data not shown).

Nearly half (47 percent) of respondents cited some level of difficulty paying for heating, housing, and medical care; 24 percent said it was slightly difficult, 17 percent said it was somewhat difficult, and 7 percent said it was very difficult paying for these necessities (Figure 8).

Figure 8: Difficulty Paying for Heating, Housing, or Medical Care; Community Health Needs Assessment, 2024



Respondent n: 59.

Significant Community Health Needs

Based on an analysis of survey data several issues were identified as issues with the greatest degree of consensus among survey respondents. Secondary data are provided in support of these findings.

- Affordability and availability of community services.** A majority of respondents disagreed when asked about the adequacy of various services in their community. Two-thirds of respondents disagreed that their community has adequate access to affordable housing (66 percent) or adequate public transportation (67 percent). Furthermore, 62 percent of respondents disagreed that their community has adequate access to affordable healthy foods. More than half of respondents (56 percent) disagreed that their community has access to sufficient quality child care options and 57 percent disagreed that their community has a thriving business district. The affordability and availability of child care and housing were recognized as priority health needs during the previous CHNA conducted in 2022. More than half (53 percent) of respondents indicated that the availability of affordable housing since 2022 has not changed and 35 percent said that it has worsened. However, 43 percent of respondents indicated that access to child care has not changed, 30 percent said it has improved, and 27 percent said it has worsened. While the average home value, monthly housings costs, and monthly rent in the community are lower than statewide averages, median household income is substantially lower. In addition, the poverty rate is slightly higher than the statewide average (10.7 percent compared to 9.3 percent, respectively).
- Suicide, mental health (anxiety, stress, depression), and substance misuse.** There was substantial consensus among respondents regarding the issues of suicide, mental health, and substance misuse in their community. All respondents had at least some level of concern for suicide and mental health in their community; 62 percent were very concerned about suicide and 60 percent were very concerned about mental health (anxiety, stress, depression). Ninety-eight percent of respondents were at least somewhat concerned about substance misuse; 55 percent were very concerned. Mental health was also recognized as an area of concern during the previous CHNA conducted in 2022. Although half (49 percent) of respondents indicated that the issue has not changed since 2022, 31 percent indicated that it has improved and 20 percent indicated that it has worsened. Thirty-six percent of respondents disagreed when asked if the community has adequate mental health care services — and the ratio of residents to mental health care providers in the community (3,870:1) is substantially higher (worse) than the ratio statewide (300:1) and nationally (320:1).
- Elder care services, assisted living, and long-term care.** There was a substantial level of consensus among respondents regarding services and needs associated with senior services. Ninety-five percent of respondents were at least somewhat concerned about the availability of services to support seniors; 59 percent were very concerned. Lake of the Woods County has a higher percentage of households with adults 65 and older and householders age 65 and older living alone than Minnesota and the nation, on average.
- Access to Health Care Services.** Nearly all (94 percent) respondents disagreed that their community has adequate access to dental care and vision care (86 percent). Respondents were fairly evenly split on the adequacy of health care services and primary health care providers and nurses; 42 percent of respondents disagreed their community has adequate health care services and 49 percent disagreed their community has adequate primary care providers and nurses. A lack of health care providers was identified as a priority health need in

the previous CHNA in 2022. When asked about change since 2022, 48 percent of respondents indicated that the availability of health care providers has improved, 31 percent said no change, and 20 percent indicated availability has worsened. The ratio of residents to primary care physicians is higher (worse) in Lake of the Woods County (3,820:1) than in Minnesota (1,130:1) and the nation (1,330:1). In addition, the ratio of residents to dentists is higher (worse) in Lake of the Woods County (3,870:1) than in Minnesota (1,290:1) and the nation (1,360:1).

- Barriers to Health Care.** More than half of respondents indicated that the availability of local health care services, the distance to access care, the price of health care, the length of time it takes to see a provider, the price of prescription drugs (even with insurance), and transportation were at least somewhat of a barrier to accessing health care in their community. More than half (53 percent) of respondents indicated that the availability of local health care services posed somewhat of a barrier to accessing medical care and 29 percent indicated that it was an extreme barrier. Forty percent of respondents indicated distance to access care was at least somewhat of a barrier and 37 percent said it was an extreme barrier. The median household income in the community is substantially lower (\$61,667) than Minnesota (\$84,313) and the nation (\$75,149). Further, the percentage of residents with Medicaid coverage is higher in Lake of the Woods County (25.7 percent) compared to Minnesota (17.8 percent) and the nation (20.4 percent).

Survey findings were presented at a community input meeting on January 15, 2025. During the meeting, attendees discussed the survey findings as presented. Those present noted that several of the areas of concern identified in this survey as well as in the previous CHNA have improved, including mental health, substance misuse, and the area's lack of health care providers. However, community members observed that there was still a concerning lack of access to dental and vision care in the community, and that housing affordability in the community was a serious concern. After discussion, the group ultimately voted to prioritize:

- 1. Access to Health Care Services: Dental/Vision**
- 2. Substance Abuse**
- 3. Mental Health**

CHI LakeWood Health representatives agreed to adopt these prioritized health needs and to develop strategies and an action plan to address them. Other needs were not prioritized due to available expertise and availability of resources.

Resources Potentially Available to Address Needs

The following organizations have been indicated as potential resources in CHI LakeWood Health's effort to meet community health needs.

Dental Care

- Lake Family Dental
- Northern Lights Dental
- Northern Dental Access
- Lucachick Dental
- Children's Dental Services
- Norther Dental Access

Vision Care

- InfantSEE
- Minnesota State Services for the Blind
- Minnesota Eye Foundation
- Sanford Bemidji Eye Center & Optical
- Warroad Eye Clinic

Mental Health

- Senior Life Solutions
- CHI LakeWood Health
- Dr. Mark Tsibulsky Sanford Behavioral Health TRF
- Lifecare Behavioral Health-Roseau
- Northland Counseling- International Falls
- Cedar Branch Counseling Group-International Falls
- Stellher Human Services
- Sanford TRF Behavioral Health
- Lake of the Woods County Social Services
- Lake of the Woods School

- Lake of the Woods Suicide Awareness and Prevention Coalition


Substance Misuse

- Pine Manor
- Northland Recovery
- Range Mental Health Center
- Minnesota Recovery Connection
- Stellher Human Services
- Riverview Recovery
- Rainy River Recovery
- Northland Counseling
- Alcoholics/Narcotics Anonymous
- Lake of the Woods Prevention Coalition

Impact of Actions Taken Since Preceding CHNA


2023- 2025 Community Health Implementation Strategy

Health Need: Lack of Health Care Providers

	Health Need: Lack of Health Care Providers
Strategy or Program	Summary Description
Strategy #1	<p>To address this need, the hospital will implement the following strategies in fiscal years 2023- 2025:</p> <ul style="list-style-type: none"> • Continue to work collaboratively with CommonSpirit recruitment for expanded support to recruit qualified providers for both ER and Primary Care. • Continue collaboration with Sanford Health for outreach specialist services. • Explore opportunities with Altru and LifeCare Medical Center. • Evaluate the feasibility of adding additional outreach specialists. • Utilize local Community Health Worker to assist and align health care resources for community members. • Continue collaborative efforts with Sanford Health and explore opportunities to increase surgical coverage. • Explore other surgical opportunities with additional health care facilities such as LifeCare Medical Center. <p>FY23 Key Activities</p> <p>CHI LakeWood Health worked with both CommonSpirit and an outside recruitment firm in FY2023 to identify potential primary care candidates for hire. One physician candidate was introduced and a preliminary recruitment offer accepted. The candidate was later determined to be ineligible for payer enrollment. As a result, the physician was not hired. Sanford continued to provide outreach services at LakeWood related to Orthopedics, General Surgery, Cardiology, and OB/GYN. Sanford was not able to expand any specialty coverage in FY2023. After requesting general surgery expansion with Sanford, LakeWood reached out to other neighboring health care facilities. LakeWood met with a general surgeon but the surgeon declined to provide outreach at LakeWood. LakeWood then contacted an independent general surgeon and started exploratory outreach discussions. CHI LakeWood Health hired and utilized a community health worker to assist in aligning community health care resources to individuals in need. Community members were often not receptive to the assistance. This is largely due to the existing successful Lake of the Woods County Social Services department. This employee did leave during FY2023, and since the services were duplicated, CHI LakeWood Health did not replace the position.</p> <p>FY23 Measures</p> <p>There are no measures to report.</p> <p>FY24 Key Activities</p> <p>CHI LakeWood Health worked with both CommonSpirit and an outside recruitment firm in FY2024 to identify potential primary care candidates for hire.</p>


	<p>One physician assistant candidate was introduced and a recruitment offer accepted. The candidate began employment in July of 2024. Sanford continued to provide outreach services at LakeWood related to Orthopedics, General Surgery, Cardiology, and OB/GYN. Sanford was not able to expand any specialty coverage in FY2024. After requesting general surgery expansion with Sanford in FY 2023, LakeWood reached out to other neighboring health care facilities. LakeWood met with a general surgeon but the surgeon declined to provide outreach at LakeWood. LakeWood then contacted an independent general surgeon and started exploratory outreach discussions during FY 2023. In FY 2024, this independent general surgeon started providing services at CHI LakeWood Health. CHI LakeWood Health hired and utilized a community health worker to assist in aligning community health care resources to individuals in need. Community members were often not receptive to the assistance. This is largely due to the success of the existing Lake of the Woods County Social Services department. This employee did leave during FY2023, and since the services were duplicated, CHI LakeWood Health did not replace the position in FY2023 or FY2024.</p> <p>FY24 Measures</p> <p>CHI LakeWood Health recruited one additional primary care provider, a physician assistant, who began employment in July of 2024. CHI LakeWood Health contracted with one additional general surgeon to provide additional surgical days in FY 2024. The baseline for surgical days was 1 per month or 12 annually. In FYE 2024, CHI LakeWood Health provided 19 days of surgical care.</p> <p>FY 25 Pending Activities</p>
Planned Resources	The hospital will provide resources and funds for recruitment efforts. In addition, they will provide space for outreach specialists and nurses for surgical days.
Planned Collaborators	CommonSpirit Health Recruitment, Altru, Sanford Health and LifeCare Medical Center.

Health Need: Substance Abuse

	Health Need: Substance Abuse
Strategy or Program	Summary Description
Strategy #2	<p>To address this need, the hospital will implement the following strategies in fiscal years 2023-2025:</p> <ul style="list-style-type: none"> • Designate a hospital representative to collaborate and assist in promoting the Lake of the Woods Prevention Coalition activities. • Continue to provide space as needed for prevention coalition meetings. • Continue participation as an active stakeholder in the Lake of the Woods CARA Grant. • Continue to provide space for meetings with stakeholders. • Support and promote substance abuse education efforts for both the community and hospital employees. <p>FY23 Key Activities</p> <p>CHI LakeWood Health designated several representatives to serve on the Lake of the Woods Prevention Coalition committee meetings. LakeWood's leaders serve as a liaison between the coalition and the hospital which fostered a collaborative effort with coalition initiatives. In FY2023 this included hospital participation in the communities National Night Out event and the Students Teaching Uninformed Decisions (STUDS) lock-in event. Additionally, LakeWood Health continues to provide space free of charge for these meetings. CHI LakeWood Health's Pharmacist has attended Comprehensive Addiction Recovery Act (CARA) Grant meetings. This grant's purpose is to assist with addiction and recovery from substance abuse. In FY2023 the hospital worked collaboratively on the CARA grant initiatives and implemented a safe drug disposal box located at CHI LakeWood Health Clinic. In addition, LakeWood provided community education on the use and location of the safe drug disposal box.</p> <p>FY23 Measures</p> <p>There are no measures to report for FY2023. Relevant measures will be identified in FY2024.</p> <p>FY24 Key Activities</p> <p>CHI LakeWood Health designated several representatives to serve on the Lake of the Woods Prevention Coalition committee meetings. LakeWood's leaders serve as a liaison between the coalition and the hospital which fostered a collaborative effort with coalition initiatives. In FY2024 this included hospital participation in a National Night Out event. Additionally, LakeWood Health continues to provide space free of charge for these meetings. CHI LakeWood Health's Pharmacist has attended Comprehensive Addiction Recovery Act (CARA) Grant meetings. This grant's purpose is to assist with addiction and recovery from substance abuse. During FY2024, the Prevention Coalition meetings and CARA meetings were combined into a single event. In FY2023 the hospital worked collaboratively on the CARA grant initiatives and implemented a safe drug disposal box located at CHI LakeWood Health Clinic. In addition, LakeWood provided community education on the use and location of the safe drug disposal box. In FY2024, a follow up event was held which included community education on safe drug disposal boxes. LakeWood marketing/communications provided information on social media and collaborated with the Northern Light Region on an educational article in the paper.</p>

	<p>Hospital stakeholders participated in a one-hour education session from the American Lung Association which focused on vaping, youth addiction and nicotine treatment. This education was also provided to Lake of the Woods school employees. LakeWood's Community Health Manager and the CARA Grant program coordinators sit on the LOW County Advisory Council for the OPIOID Settlement Funding. LakeWood's Community Health Manager and Marketing Manager developed a community survey on behalf of the advisory council. The survey is designed to obtain community feedback on how the funds should be utilized in LOW County. CHI LakeWood Health provided a letter of support for the Prevention Coalition grant application. With both the DFC (Drug Free Communities) and CARA (Comprehensive Addiction and Recovery Act) grants nearing the end, they are in the process of writing a new grant, Partnerships For Success (PFS). The goal is to continue the work being done with both – DFC focuses on youth prevention and CARA targets the adult population and the opioid crisis. In addition, the PFC grant will allow for the addition of a mental health component. CHI LakeWood Health supported the release of the OPIOID Settlement Funding survey to the community. The survey was promoted through a local paper, social media and LOW fair booth.</p> <p>FY24 Measures</p> <p>CHI LakeWood Health had representation at 4 of 5 Prevention Coalition Meetings and 6 of 7 CARA meetings.</p> <p>FY 25 Pending Activities</p>
Planned Resources	Provide staff time for collaboration, participation and education with Lake of the Woods Prevention Coalition and the CARA grant activities.
Planned Collaborators	Lake of the Woods Prevention Coalition and CARA grant stakeholders.

Health Need: Mental Health

	Health Need: Mental Health
Strategy or Program	Summary Description
Strategy	<ul style="list-style-type: none"> • Implement Senior Life Solutions: An intensive outpatient group therapy program designed to meet the mental health needs of those 65 and older. • Promote the new service to increase awareness and participation. • Promote and grow current behavioral health services and onsite licensed social worker. • Collaborate with other organizations that have a mission to promote mental health services, resources and education. • Integration of the Community Health Worker to guide individuals to appropriate mental health resources. <p>FY23 Key Activities</p> <p>CHI LakeWood Health implemented Senior Life Solutions an outpatient mental health program during FY2023. This program provides outpatient group mental health therapy. LakeWood Regional Healthcare Foundation provided funding in support of a transportation van for the new service line. The program was advertised locally through social media, radio, and newspapers. CHI LakeWood Health's Public Health leader continues active involvement on the Lake of the Woods (LOW) Suicide Awareness and Prevention Committee. LakeWood Regional Healthcare Foundation also provided a monetary donation to this program in the amount of \$500 to support the committee's activities. CHI LakeWood Health also continues to collaborate all available community resources including LakeWood Behavioral Health, Senior Life Solutions, Lake of the Woods Social Services, Crisis Prevention Team, and Lake of the Woods School.</p> <p>FY23 Measures</p> <p># of individuals served in the Senior Life Solutions program: 4</p> <p>FY24 Key Activities</p> <p>CHI LakeWood Health implemented Senior Life Solutions an outpatient mental health program during FY2023 and continued this program through FY 2024. This program provides outpatient group mental health therapy. The program was advertised locally through social media, radio, and newspapers. Additionally, there was active participation at community events such as the county fair, service clubs, Brink Center, Ruby's pantry, and Warroad Care Center to increase awareness of the service and those who could benefit. CHI LakeWood Health also offers individual behavioral therapy and actively promoted these services during FYE 2024. This goal was to increase awareness and provide behavioral health services to patients with mental health needs. Activities included local media advertising, county fair, contact with Sanford Health in Their River Falls and Altru Clinic in Warroad, attending LOW Suicide Awareness Committee, and other activities as appropriate. CHI LakeWood Health's Public Health leader continues active involvement on the Lake of the Woods (LOW) Suicide Awareness and Prevention Committee. CHI LakeWood Health also continues to collaborate with all available community resources including LakeWood Behavioral Health, Senior Life Solutions, Lake of the Woods Social Services, Crisis Prevention Team, and Lake of the Woods School.</p> <p>FY24 Measure</p> <p>The Senior Life Solutions program served an average of 2.75 patients per month in FY 2024.</p>

	Annual Behavioral Health visits increased 15.9% (106 visits) in FY 2024. FY25 Pending Activities
Planned Resources	The hospital will provide community health worker, outreach communications, and space for these initiatives.
Planned Collaborators	The hospital will partner with Senior Life Solutions and LOW Suicide Prevention and Awareness Committee.

References

Centers for Disease Control and Prevention. (2024). *CDC/ATSDR SVI: Fact sheet*. Centers for Disease Control and Prevention.

https://www.atsdr.cdc.gov/placeandhealth/svi/fact_sheet/fact_sheet.html

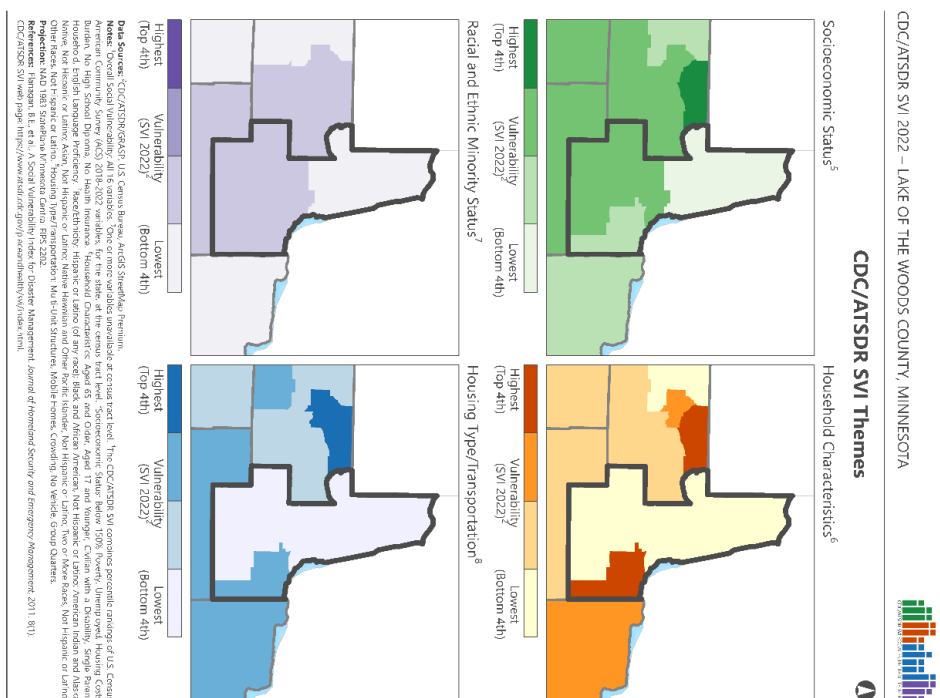
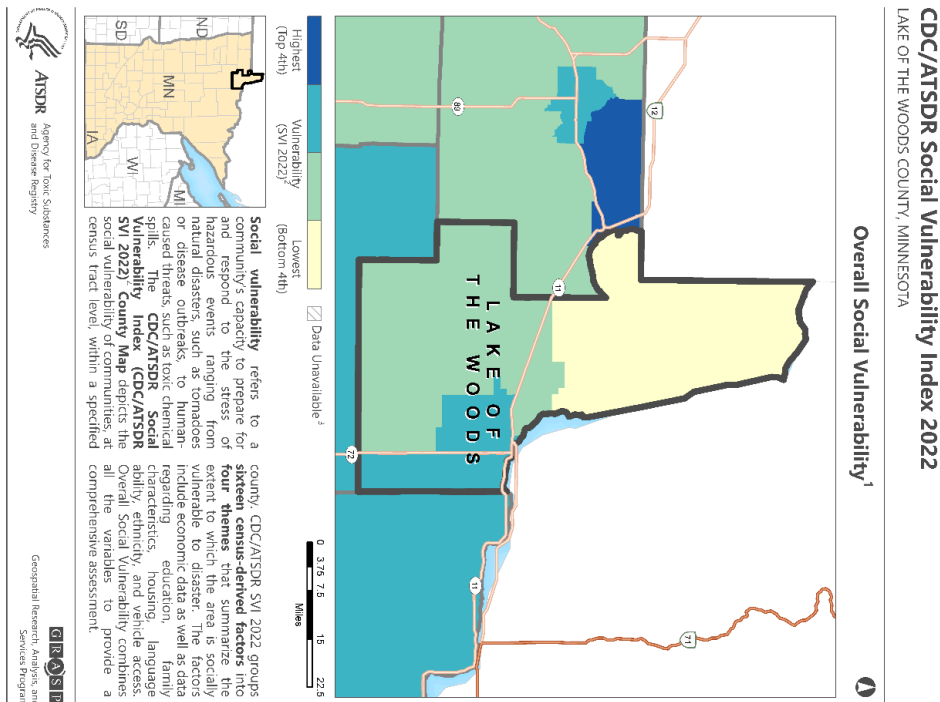
County Health Rankings & Roadmaps (2024). *Lake of the Woods County, Minnesota*. County Health Rankings & Roadmaps. [https://www.countyhealthrankings.org/health-data/north-dakota/Lake of the Woods?year=2024](https://www.countyhealthrankings.org/health-data/north-dakota/Lake-of-the-Woods?year=2024)

Cutter, S. L., Ash, K. D., & Emrich, C. T. (2014). The geographies of community disaster resilience. *Global Environmental Change*, 29, 65–77. <https://doi.org/10.1016/j.gloenvcha.2014.08.005>

National Risk Index. (2024). *Lake of the Woods County, Minnesota*. Federal Emergency Management Agency. <https://hazards.fema.gov/nri/>

Appendices

Appendix A: CDC/ASTDR Social Vulnerability Index 2022, Lake of the Woods County, MN



Appendix B: Survey Instrument

Please note: the instrument below has been formatted to allow for mail completion and may look slightly different than presented online. The questions are the same.

COMMUNITY HEALTH NEEDS ASSESSMENT 2024

Every three years, we conduct a Community Health Needs Assessment (CHNA) to better understand health and well-being at individual and community levels. This survey will ask you a few questions about the challenges in your community, and how you think they should be approached. It will also ask a few questions about you, so we can understand more about your individual experiences as they relate to your health and well-being. There are no wrong answers to these questions, and your answers are anonymous. Your name will not be on any reports, and your answers will be grouped with those from other people who respond.

This survey will take about 10 minutes to complete. Your participation is voluntary. If you do not want to participate at all, or if you do not want to answer a particular question, that's okay. If you choose to do the survey, your answers will be kept anonymous and confidential and will be used only to answer questions related to the purpose of this study. What we learn from the survey will be used to plan communication strategies to help people in your community.

You have the option to include your email address in a gift card prize draw! Simply complete the survey, include your email address at the end, and return the survey to us for your chance to win!

Your contact information will not be used for any other purpose than the prize draw. It will not be used in analysis or reporting.

If you have any trouble with any question, please refer to the following resources:

Center for Social Research

Nancy Hodur	nancy.hodur@ndsu.edu	(701) 231-8621
Kaeleigh Schroeder	kaeleigh.schroeder@ndsu.edu	
Avi Slone	avram.slone@ndsu.edu	

CommonSpirit Healthy Communities liaison

Ashley Carroll	ashley.carroll@commonspirit.org
----------------	---------------------------------

Completing the survey means that you give your consent to participate in this Community Health Needs Assessment.

What is your zip code?

What is the state where you live?

What is the county where you live?

Please indicate your level of agreement for each of the following statements about the people in your community.

	Strongly Disagree	Somewhat Disagree	Neither Agree nor Disagree	Somewhat Agree	Strongly Agree	I don't know
My community is culturally diverse	<input type="checkbox"/>	<input type="checkbox"/>	<input type="checkbox"/>	<input type="checkbox"/>	<input type="checkbox"/>	<input type="checkbox"/>
People feel welcome and accepted in my community	<input type="checkbox"/>	<input type="checkbox"/>	<input type="checkbox"/>	<input type="checkbox"/>	<input type="checkbox"/>	<input type="checkbox"/>
There is a sense of civic responsibility and engagement in my community	<input type="checkbox"/>	<input type="checkbox"/>	<input type="checkbox"/>	<input type="checkbox"/>	<input type="checkbox"/>	<input type="checkbox"/>
The people in my community have a shared vision and community goals	<input type="checkbox"/>	<input type="checkbox"/>	<input type="checkbox"/>	<input type="checkbox"/>	<input type="checkbox"/>	<input type="checkbox"/>

Is there anything you would like to add about the people in your community?

Please indicate your level of agreement for each of the following statements about services in your community.

	Strongly Disagree	Somewhat Disagree	Neither Agree nor Disagree	Somewhat Agree	Strongly Agree	I don't know
My community has adequate opportunities for recreation and leisure for all ages	<input type="checkbox"/>	<input type="checkbox"/>	<input type="checkbox"/>	<input type="checkbox"/>	<input type="checkbox"/>	<input type="checkbox"/>
My community has a thriving business district with access to needed goods and services	<input type="checkbox"/>	<input type="checkbox"/>	<input type="checkbox"/>	<input type="checkbox"/>	<input type="checkbox"/>	<input type="checkbox"/>
My community provides adequate public services like snow removal, garbage collection, or recycling	<input type="checkbox"/>	<input type="checkbox"/>	<input type="checkbox"/>	<input type="checkbox"/>	<input type="checkbox"/>	<input type="checkbox"/>

My community has adequate child care services	<input type="checkbox"/>	<input type="checkbox"/>	<input type="checkbox"/>	<input type="checkbox"/>	<input type="checkbox"/>	<input type="checkbox"/>
My community has adequate senior services	<input type="checkbox"/>	<input type="checkbox"/>	<input type="checkbox"/>	<input type="checkbox"/>	<input type="checkbox"/>	<input type="checkbox"/>
My community has a quality education system	<input type="checkbox"/>	<input type="checkbox"/>	<input type="checkbox"/>	<input type="checkbox"/>	<input type="checkbox"/>	<input type="checkbox"/>
My community has adequate public transportation services	<input type="checkbox"/>	<input type="checkbox"/>	<input type="checkbox"/>	<input type="checkbox"/>	<input type="checkbox"/>	<input type="checkbox"/>
My community has adequate employment opportunities that pay a livable wage	<input type="checkbox"/>	<input type="checkbox"/>	<input type="checkbox"/>	<input type="checkbox"/>	<input type="checkbox"/>	<input type="checkbox"/>
My community has adequate law enforcement.	<input type="checkbox"/>	<input type="checkbox"/>	<input type="checkbox"/>	<input type="checkbox"/>	<input type="checkbox"/>	<input type="checkbox"/>
My community has enough affordable housing for everyone who needs it	<input type="checkbox"/>	<input type="checkbox"/>	<input type="checkbox"/>	<input type="checkbox"/>	<input type="checkbox"/>	<input type="checkbox"/>
My community has adequate access to healthy and affordable foods	<input type="checkbox"/>	<input type="checkbox"/>	<input type="checkbox"/>	<input type="checkbox"/>	<input type="checkbox"/>	<input type="checkbox"/>

Is there anything you would like to add about services in your community?

How concerned are you about each of the following in your community?

	Not concerned at all	Slightly concerned	Somewhat concerned	Very concerned	I don't know	Not applicable to my community
Substance misuse (alcohol, prescription drugs, tobacco or vaping, illicit or street drugs)	<input type="checkbox"/>	<input type="checkbox"/>	<input type="checkbox"/>	<input type="checkbox"/>	<input type="checkbox"/>	<input type="checkbox"/>
Mental health (anxiety, stress, depression)	<input type="checkbox"/>	<input type="checkbox"/>	<input type="checkbox"/>	<input type="checkbox"/>	<input type="checkbox"/>	<input type="checkbox"/>
Suicide	<input type="checkbox"/>	<input type="checkbox"/>	<input type="checkbox"/>	<input type="checkbox"/>	<input type="checkbox"/>	<input type="checkbox"/>
Access to healthy foods	<input type="checkbox"/>	<input type="checkbox"/>	<input type="checkbox"/>	<input type="checkbox"/>	<input type="checkbox"/>	<input type="checkbox"/>
Food insecurity, hunger	<input type="checkbox"/>	<input type="checkbox"/>	<input type="checkbox"/>	<input type="checkbox"/>	<input type="checkbox"/>	<input type="checkbox"/>
Poverty in my community	<input type="checkbox"/>	<input type="checkbox"/>	<input type="checkbox"/>	<input type="checkbox"/>	<input type="checkbox"/>	<input type="checkbox"/>
Sexually transmitted diseases	<input type="checkbox"/>	<input type="checkbox"/>	<input type="checkbox"/>	<input type="checkbox"/>	<input type="checkbox"/>	<input type="checkbox"/>
Crime in my community	<input type="checkbox"/>	<input type="checkbox"/>	<input type="checkbox"/>	<input type="checkbox"/>	<input type="checkbox"/>	<input type="checkbox"/>
Availability of long-term care or assisted living facilities	<input type="checkbox"/>	<input type="checkbox"/>	<input type="checkbox"/>	<input type="checkbox"/>	<input type="checkbox"/>	<input type="checkbox"/>

Availability of elder care services to support independent living, or aging in place	<input type="checkbox"/>	<input type="checkbox"/>	<input type="checkbox"/>	<input type="checkbox"/>	<input type="checkbox"/>	<input type="checkbox"/>
Obesity or overweightness	<input type="checkbox"/>	<input type="checkbox"/>	<input type="checkbox"/>	<input type="checkbox"/>	<input type="checkbox"/>	<input type="checkbox"/>
Negative effects of social media	<input type="checkbox"/>	<input type="checkbox"/>	<input type="checkbox"/>	<input type="checkbox"/>	<input type="checkbox"/>	<input type="checkbox"/>

Are there other issues in your community that you are concerned about?

How concerned are you about the following types of violence in your community?

	Not concerned at all	Slightly concerned	Somewhat concerned	Very concerned	I don't know	Not applicable to my community
Cyber bullying	<input type="checkbox"/>	<input type="checkbox"/>	<input type="checkbox"/>	<input type="checkbox"/>	<input type="checkbox"/>	<input type="checkbox"/>
Child abuse or neglect	<input type="checkbox"/>	<input type="checkbox"/>	<input type="checkbox"/>	<input type="checkbox"/>	<input type="checkbox"/>	<input type="checkbox"/>
Intimate partner violence	<input type="checkbox"/>	<input type="checkbox"/>	<input type="checkbox"/>	<input type="checkbox"/>	<input type="checkbox"/>	<input type="checkbox"/>
Emotional abuse (including: intimidation, isolation, verbal threats, economic abuse/withholding funds)	<input type="checkbox"/>	<input type="checkbox"/>	<input type="checkbox"/>	<input type="checkbox"/>	<input type="checkbox"/>	<input type="checkbox"/>
Sexual abuse or assault	<input type="checkbox"/>	<input type="checkbox"/>	<input type="checkbox"/>	<input type="checkbox"/>	<input type="checkbox"/>	<input type="checkbox"/>
Stalking	<input type="checkbox"/>	<input type="checkbox"/>	<input type="checkbox"/>	<input type="checkbox"/>	<input type="checkbox"/>	<input type="checkbox"/>
Verbal threats or harassment	<input type="checkbox"/>	<input type="checkbox"/>	<input type="checkbox"/>	<input type="checkbox"/>	<input type="checkbox"/>	<input type="checkbox"/>
Gun violence	<input type="checkbox"/>	<input type="checkbox"/>	<input type="checkbox"/>	<input type="checkbox"/>	<input type="checkbox"/>	<input type="checkbox"/>

Are there other types of violence in your community that you are concerned about?

Please indicate your level of agreement with the following issues related to medical services in your community.

	Strongly Disagree	Somewh at Disagree	Neither Agree nor Disagree	Somewh at Agree	Strongly Agree	I don't know
It is easy to get an appointment for health care services in my community	<input type="checkbox"/>	<input type="checkbox"/>	<input type="checkbox"/>	<input type="checkbox"/>	<input type="checkbox"/>	<input type="checkbox"/>
My community has adequate primary care providers and nurses	<input type="checkbox"/>	<input type="checkbox"/>	<input type="checkbox"/>	<input type="checkbox"/>	<input type="checkbox"/>	<input type="checkbox"/>
My community has adequate health care services to meet my health care needs	<input type="checkbox"/>	<input type="checkbox"/>	<input type="checkbox"/>	<input type="checkbox"/>	<input type="checkbox"/>	<input type="checkbox"/>
My community has adequate dental care providers	<input type="checkbox"/>	<input type="checkbox"/>	<input type="checkbox"/>	<input type="checkbox"/>	<input type="checkbox"/>	<input type="checkbox"/>
My community has adequate vision care providers	<input type="checkbox"/>	<input type="checkbox"/>	<input type="checkbox"/>	<input type="checkbox"/>	<input type="checkbox"/>	<input type="checkbox"/>
My community has adequate mental health services	<input type="checkbox"/>	<input type="checkbox"/>	<input type="checkbox"/>	<input type="checkbox"/>	<input type="checkbox"/>	<input type="checkbox"/>
My community has adequate access to emergency response services such as ambulance or fire fighters	<input type="checkbox"/>	<input type="checkbox"/>	<input type="checkbox"/>	<input type="checkbox"/>	<input type="checkbox"/>	<input type="checkbox"/>
I can easily navigate the health care system in my community	<input type="checkbox"/>	<input type="checkbox"/>	<input type="checkbox"/>	<input type="checkbox"/>	<input type="checkbox"/>	<input type="checkbox"/>
I receive quality health care in my community	<input type="checkbox"/>	<input type="checkbox"/>	<input type="checkbox"/>	<input type="checkbox"/>	<input type="checkbox"/>	<input type="checkbox"/>
In my community, care is well-coordinated across providers and services	<input type="checkbox"/>	<input type="checkbox"/>	<input type="checkbox"/>	<input type="checkbox"/>	<input type="checkbox"/>	<input type="checkbox"/>

Do you have any other concerns about access to health care services in your community?

Which preventative health care measures have you received in the last year? Select all that apply.

- | | |
|--|---|
| <input type="checkbox"/> Vaccinations | <input type="checkbox"/> Counseling for tobacco use, alcohol use, weight loss, or behavioral health |
| <input type="checkbox"/> Annual physical exam | <input type="checkbox"/> Depression screening |
| <input type="checkbox"/> Mammogram | <input type="checkbox"/> STD/STI screening |
| <input type="checkbox"/> Colonoscopy | <input type="checkbox"/> Vision exam |
| <input type="checkbox"/> Blood pressure or cholesterol screening | <input type="checkbox"/> Dental exam/annual checkup |

To what degree are each of the following a barrier to your ability to access health care services?

	Not at all a barrier	Somewhat of a barrier	Extreme barrier	I don't know
Transportation to health services locations	<input type="checkbox"/>	<input type="checkbox"/>	<input type="checkbox"/>	<input type="checkbox"/>
Availability of local services to meet my health care needs	<input type="checkbox"/>	<input type="checkbox"/>	<input type="checkbox"/>	<input type="checkbox"/>
Ability to see the same provider over time	<input type="checkbox"/>	<input type="checkbox"/>	<input type="checkbox"/>	<input type="checkbox"/>
Scheduling health care services within clinic hours	<input type="checkbox"/>	<input type="checkbox"/>	<input type="checkbox"/>	<input type="checkbox"/>
The price of prescription drugs, even with insurance	<input type="checkbox"/>	<input type="checkbox"/>	<input type="checkbox"/>	<input type="checkbox"/>
The price of health care services (such as co-payments or deductibles), even with health insurance	<input type="checkbox"/>	<input type="checkbox"/>	<input type="checkbox"/>	<input type="checkbox"/>
Communication or language barriers	<input type="checkbox"/>	<input type="checkbox"/>	<input type="checkbox"/>	<input type="checkbox"/>
Difficulty using or accessing technology to communicate with provider or system	<input type="checkbox"/>	<input type="checkbox"/>	<input type="checkbox"/>	<input type="checkbox"/>
Concerns about confidentiality	<input type="checkbox"/>	<input type="checkbox"/>	<input type="checkbox"/>	<input type="checkbox"/>
Disability accommodations	<input type="checkbox"/>	<input type="checkbox"/>	<input type="checkbox"/>	<input type="checkbox"/>
Health insurance coverage	<input type="checkbox"/>	<input type="checkbox"/>	<input type="checkbox"/>	<input type="checkbox"/>
The length of time to see a provider, from making an appointment to attending the appointment	<input type="checkbox"/>	<input type="checkbox"/>	<input type="checkbox"/>	<input type="checkbox"/>
Distance to access care	<input type="checkbox"/>	<input type="checkbox"/>	<input type="checkbox"/>	<input type="checkbox"/>

Are there other barriers to your ability to access health care in your community?

Do you currently have a primary care doctor?

- ☐ Yes
- ☐ No
- ☐ Prefer not to respond

Where do you find out about health information? Select all that apply.

- | | |
|--|---|
| <input type="checkbox"/> Primary care provider | <input type="checkbox"/> My employer |
| <input type="checkbox"/> Other health care providers | <input type="checkbox"/> Newspaper |
| <input type="checkbox"/> Public health professionals | <input type="checkbox"/> Radio |
| <input type="checkbox"/> Internet sources | <input type="checkbox"/> Other (please specify _____) |
| <input type="checkbox"/> Word of mouth | |
| <input type="checkbox"/> Advertising, such as TV commercials | |

What type of health insurance coverage do you currently have? Select all that apply.

- ☐ Commercial private health insurance (coverage purchased by you or your employer)
- ☐ Medicare
- ☐ Medicaid etc.)
- ☐ Indian Health Service (IHS)
- ☐ Military (Tricare, Champus, VA)
- ☐ Other (please specify) _____
- ☐ No health insurance (**GO TO Q3.7**)
- ☐ Prefer not to say

Why do you NOT have health insurance? Select all that apply.

DO NOT RESPOND IF YOU DO HAVE HEALTH INSURANCE

- ☐ Too expensive
- ☐ Too difficult or complex to obtain health insurance
- ☐ I have a pre-existing condition that is not covered
- ☐ I am healthy and do not need insurance
- ☐ I do not qualify for Medicaid
- ☐ I was disenrolled from Medicaid
- ☐ Another reason (please specify) _____
- ☐ Prefer not to say

What specific health care services, if any, do you think should be added locally?

Did you move to your community in the past year?

- ☐ Yes
- ☐ No (**GO TO Q4.3**)
- ☐ Prefer not to respond (**GO TO Q4.3**)

How difficult was it to do the following?

	Not difficult at all	Slightly difficult	Somewhat difficult	Very difficult	I don't know/I'm not sure	Not applicable to me
Enroll children in school	<input type="checkbox"/>	<input type="checkbox"/>	<input type="checkbox"/>	<input type="checkbox"/>	<input type="checkbox"/>	<input type="checkbox"/>
Find housing	<input type="checkbox"/>	<input type="checkbox"/>	<input type="checkbox"/>	<input type="checkbox"/>	<input type="checkbox"/>	<input type="checkbox"/>
Find healthcare	<input type="checkbox"/>	<input type="checkbox"/>	<input type="checkbox"/>	<input type="checkbox"/>	<input type="checkbox"/>	<input type="checkbox"/>
Find a job	<input type="checkbox"/>	<input type="checkbox"/>	<input type="checkbox"/>	<input type="checkbox"/>	<input type="checkbox"/>	<input type="checkbox"/>
Find childcare	<input type="checkbox"/>	<input type="checkbox"/>	<input type="checkbox"/>	<input type="checkbox"/>	<input type="checkbox"/>	<input type="checkbox"/>

Have you experienced discrimination in the past 12 months?

- ☐ Yes
- ☐ No (**GO TO Q4.6**)
- ☐ Prefer not to respond (**GO TO Q4.6**)

In what area(s) have you experienced discrimination? Select all that apply.

- | | |
|---|--|
| <input type="checkbox"/> Race | <input type="checkbox"/> Weight |
| <input type="checkbox"/> Ethnicity | <input type="checkbox"/> Disability |
| <input type="checkbox"/> Sex | <input type="checkbox"/> Religion |
| <input type="checkbox"/> Gender identity | <input type="checkbox"/> Another area (specify: _____) |
| <input type="checkbox"/> Sexual orientation | <input type="checkbox"/> Prefer not to say |
| <input type="checkbox"/> Age | |

In which of the following situations did you experience discrimination? Select all that apply.

- | | |
|---|--|
| <input type="checkbox"/> Applying for a job | <input type="checkbox"/> Applying for social services or public assistance |
| <input type="checkbox"/> At a job, work or my place of employment | <input type="checkbox"/> Interacting with the police |
| <input type="checkbox"/> Receiving medical care | <input type="checkbox"/> Appearing in court |
| <input type="checkbox"/> Looking for housing | <input type="checkbox"/> Another area (specify) _____ |
| <input type="checkbox"/> Applying for a credit card, bank loan, or mortgage | <input type="checkbox"/> Prefer not to say |
| <input type="checkbox"/> Shopping at a store or eating at a restaurant | |

How difficult is it for you to pay for heating, housing, or medical care?

- ☐ Not difficult at all
- ☐ Slightly difficult
- ☐ Somewhat difficult
- ☐ Very difficult
- ☐ I don't know/I'm not sure

In the last month, have you had to sleep outside, in a shelter, in your car, at a family member or friend's house, or in a place not meant for sleeping?

- ☐ Yes
- ☐ No
- ☐ Prefer not to say

What is your age?**What is your gender?**

- ☐ Male
- ☐ Female
- ☐ Non-binary/third gender
- ☐ Other (please describe: _____)
- ☐ Prefer not to say

Which one of these groups best represents your race? Select all that apply.

- | | |
|--|---|
| <input type="checkbox"/> American Indian or Alaska Native | <input type="checkbox"/> Two or more races |
| <input type="checkbox"/> Black or African American | <input type="checkbox"/> White |
| <input type="checkbox"/> Asian | <input type="checkbox"/> Other (please describe: _____) |
| <input type="checkbox"/> Native Hawaiian or Pacific Islander | |

Do you identify as Hispanic, Latine, or of Spanish origin?

- ☐ Yes
- ☐ No
- ☐ Prefer not to say

What is your estimated household income?

- | | |
|--|--|
| <input type="checkbox"/> Less than \$15,000 | <input type="checkbox"/> \$75,000 - \$99,999 |
| <input type="checkbox"/> \$15,000 - \$24,999 | <input type="checkbox"/> \$100,000 - \$149,999 |
| <input type="checkbox"/> \$25,000 - \$49,999 | <input type="checkbox"/> \$150,000 and over |
| <input type="checkbox"/> \$50,000 - \$74,999 | <input type="checkbox"/> Prefer not to say |

What is the highest level of education you have completed?

- | | |
|---|--|
| <input type="checkbox"/> Less than 9th Grade | <input type="checkbox"/> Associate's degree |
| <input type="checkbox"/> 9th to 12th Grade, no diploma | <input type="checkbox"/> Bachelor's degree |
| <input type="checkbox"/> High school graduate or equivalent | <input type="checkbox"/> Graduate or professional degree |
| <input type="checkbox"/> Some college, no degree | <input type="checkbox"/> Prefer not to say |

Which of these categories best describes your employment status?

- | | |
|---|--|
| <input type="checkbox"/> Employed full time | <input type="checkbox"/> Retired |
| <input type="checkbox"/> Employed part time | <input type="checkbox"/> Student |
| <input type="checkbox"/> Unemployed | <input type="checkbox"/> Disabled |
| | <input type="checkbox"/> Prefer not to say |

What is your marital status?

- ☐ Single
- ☐ Married or in a domestic partnership
- ☐ Divorced or separated
- ☐ Widowed
- ☐ Prefer not to say

How many people live in your household? Use numbers only. If you live alone, put "1".**Do you have access to reliable internet in your home?**

- ☐ Yes
- ☐ No
- ☐ Prefer not to say

How did you access this survey?

- ☐ Hospital or public health website
- ☐ Hospital or public health social media page (e.g., Facebook)
- ☐ Hospital or public health employee directly
- ☐ Economic development website or social media
- ☐ Church bulletin
- ☐ Other website or social media page (please specify) _____
- ☐ Newsletter (please specify from where) _____
- ☐ Newspaper advertisement
- ☐ Word of mouth
- ☐ Direct email (please specify from where) _____
- ☐ Another way (please specify) _____

Please provide any additional comments you think we could use to improve the delivery of health care in your community. If you need more space, please attach additional paper.

If you would like to enter our prize drawing, please write your email address below!

Thanks for completing our survey!
We appreciate your time, and your responses will help inform health care decisions in your community.

If you entered your name to be included in our draw, we'll contact the winners BY EMAIL once the survey has closed. Good luck!

Appendix C: Survey Frequencies

Completing the survey means that you give your consent to participate in this Community Health Needs Assessment.					
		Frequency	Percent	Valid Percent	Cumulative Percent
Valid	I consent	65	100.0%	100.0%	100.0%

What is your zip code?					
		Frequency	Percent	Valid Percent	Cumulative Percent
Valid		16	24.6%	24.6%	24.6%
	56623	43	66.2%	66.2%	90.8%
	56673	1	1.5%	1.5%	92.3%
	56686	4	6.2%	6.2%	98.5%
	58960	1	1.5%	1.5%	100.0%
	Total	65	100.0%	100.0%	

What is the state in which you live?					
		Frequency	Percent	Valid Percent	Cumulative Percent
Valid	Minnesota	65	100.0%	100.0%	100.0%

What is the county where you live in North Dakota?					
		Frequency	Percent	Valid Percent	Cumulative Percent
Valid	Beltrami	1	1.5%	1.5%	1.5%
	Koochiching	6	9.2%	9.2%	10.8%
	Lake of the Woods	55	84.6%	84.6%	95.4%
	Roseau	3	4.6%	4.6%	100.0%
	Total	65	100.0%	100.0%	

People in Your Community

		Strongly disagree	Somewhat disagree	Neither agree nor disagree	Somewhat agree	Strongly agree	Total
Please indicate your level of agreement for each of the following statements about the people in your community. - My community is culturally diverse	Count	9	27	10	11	6	63
	Row N %	14.3%	42.9%	15.9%	17.5%	9.5%	100.0%
Please indicate your level of agreement for each of the following statements about the people in your community. - People feel welcome and accepted in my community	Count	2	4	8	19	31	64
	Row N %	3.1%	6.3%	12.5%	29.7%	48.4%	100.0%
Please indicate your level of agreement for each of the following statements about the people in your community. - There is a sense of civic responsibility and engagement in my community	Count	1	6	7	28	21	63
	Row N %	1.6%	9.5%	11.1%	44.4%	33.3%	100.0%
Please indicate your level of agreement for each of the following statements about the people in your community. - The people in my community have a shared vision and community goals	Count	1	7	11	33	11	63
	Row N %	1.6%	11.1%	17.5%	52.4%	17.5%	100.0%

		Disagree	Neither agree nor disagree	Agree	Total
RECODE: People in your community - My community is culturally diverse	Count	36	10	17	63
	Row N %	57.1%	15.9%	27.0%	100.0%
RECODE: People in your community - People feel welcome and accepted in my community	Count	6	8	50	64
	Row N %	9.4%	12.5%	78.1%	100.0%
RECODE: People in your community - There is a sense of civic responsibility and engagement in my community	Count	7	7	49	63
	Row N %	11.1%	11.1%	77.8%	100.0%
RECODE: People in your community - The people in my community have a shared vision and community goals	Count	8	11	44	63
	Row N %	12.7%	17.5%	69.8%	100.0%

Services in Your Community

		Strongly disagree	Somewhat disagree	Neither agree nor disagree	Somewhat agree	Strongly agree	Total
Please indicate your level of agreement for each of the following statements about services in your community. - My community has adequate opportunities for recreation and leisure for all ages	Count	4	15	7	19	19	64
	Row N %	6.3%	23.4%	10.9%	29.7%	29.7%	100.0%
Please indicate your level of agreement for each of the following statements about services in your community. - My community has a thriving business district with access to needed goods and services	Count	9	28	8	18	2	65
	Row N %	13.8%	43.1%	12.3%	27.7%	3.1%	100.0%
Please indicate your level of agreement for each of the following statements about services in your community. - My community provides adequate public services like snow removal, garbage collection, or recycling	Count	2	8	9	21	25	65
	Row N %	3.1%	12.3%	13.8%	32.3%	38.5%	100.0%
Please indicate your level of agreement for each of the following statements about services in your community. - My community has adequate child care services	Count	15	20	10	11	7	63
	Row N %	23.8%	31.7%	15.9%	17.5%	11.1%	100.0%
Please indicate your level of agreement for each of the following statements about services in your community. - My community has adequate senior services	Count	12	19	6	17	5	59
	Row N %	20.3%	32.2%	10.2%	28.8%	8.5%	100.0%
Please indicate your level of agreement for each of the following statements about services in your community. - My community has a quality education system	Count	2	7	7	26	21	63
	Row N %	3.2%	11.1%	11.1%	41.3%	33.3%	100.0%
Please indicate your level of agreement for each of the following statements about services in your community. - My community has adequate public transportation services	Count	17	26	7	12	2	64
	Row N %	26.6%	40.6%	10.9%	18.8%	3.1%	100.0%
Please indicate your level of agreement for each of the following statements about services in your community. - My community has adequate employment opportunities that pay a livable wage	Count	9	12	8	26	8	63
	Row N %	14.3%	19.0%	12.7%	41.3%	12.7%	100.0%
Please indicate your level of agreement for each of the following statements about services in your community. - My community has adequate law enforcement	Count	4	7	11	20	22	64
	Row N %	6.3%	10.9%	17.2%	31.3%	34.4%	100.0%
Please indicate your level of agreement for each of the following statements about services in your community. - My community has enough affordable housing for everyone who needs it	Count	14	28	10	8	4	64
	Row N %	21.9%	43.8%	15.6%	12.5%	6.3%	100.0%
Please indicate your level of agreement for each of the following statements about services in your community. - My community has adequate access to healthy and affordable foods	Count	11	29	4	16	5	65
	Row N %	16.9%	44.6%	6.2%	24.6%	7.7%	100.0%

		Disagree	Neither agree nor disagree	Agree	Total
RECODE: Services in your community - My community has adequate opportunities for recreation and leisure for all ages	Count	19	7	38	64
	Row N %	29.7%	10.9%	59.4%	100.0%
RECODE: Services in your community - My community has a thriving business district with access to needed goods and services	Count	37	8	20	65
	Row N %	56.9%	12.3%	30.8%	100.0%
RECODE: Services in your community - My community provides adequate public services like snow removal, garbage collection, or recycling	Count	10	9	46	65
	Row N %	15.4%	13.8%	70.8%	100.0%
RECODE: Services in your community - My community has adequate child care services	Count	35	10	18	63
	Row N %	55.6%	15.9%	28.6%	100.0%
RECODE: Services in your community - My community has adequate senior services	Count	31	6	22	59
	Row N %	52.5%	10.2%	37.3%	100.0%
RECODE: Services in your community. - My community has a quality education system	Count	9	7	47	63
	Row N %	14.3%	11.1%	74.6%	100.0%
RECODE: Services in your community. - My community has adequate public transportation services	Count	43	7	14	64
	Row N %	67.2%	10.9%	21.9%	100.0%
RECODE: Services in your community. - My community has adequate employment opportunities that pay a livable wage	Count	21	8	34	63
	Row N %	33.3%	12.7%	54.0%	100.0%
RECODE: Services in your community. - My community has adequate law enforcement	Count	11	11	42	64
	Row N %	17.2%	17.2%	65.6%	100.0%
RECODE: Services in your community. - My community has enough affordable housing for everyone who needs it	Count	42	10	12	64
	Row N %	65.6%	15.6%	18.8%	100.0%
RECODE: Services in your community. - My community has adequate access to healthy and affordable foods	Count	40	4	21	65
	Row N %	61.5%	6.2%	32.3%	100.0%

Community Concerns

		Not concerned at all	Slightly concerned	Somewhat concerned	Very concerned	Total
How concerned are you about each of the following in your community? - Substance misuse (alcohol, prescription drugs, tobacco or vaping, illicit or street drugs)	Count	1	9	19	35	64
	Row N %	1.6%	14.1%	29.7%	54.7%	100.0%
How concerned are you about each of the following in your community? - Mental health (anxiety, stress, depression)	Count	0	6	19	38	63
	Row N %	0.0%	9.5%	30.2%	60.3%	100.0%
How concerned are you about each of the following in your community? - Suicide	Count	0	5	20	40	65
	Row N %	0.0%	7.7%	30.8%	61.5%	100.0%
How concerned are you about each of the following in your community? - Access to healthy foods	Count	4	19	23	18	64
	Row N %	6.3%	29.7%	35.9%	28.1%	100.0%
How concerned are you about each of the following in your community? - Food insecurity or hunger	Count	4	18	26	12	60
	Row N %	6.7%	30.0%	43.3%	20.0%	100.0%
How concerned are you about each of the following in your community? - Poverty in my community	Count	4	14	32	12	62
	Row N %	6.5%	22.6%	51.6%	19.4%	100.0%
How concerned are you about each of the following in your community? - Sexually transmitted diseases or infections	Count	16	16	16	3	51
	Row N %	31.4%	31.4%	31.4%	5.9%	100.0%
How concerned are you about each of the following in your community? - Crime in my community	Count	13	20	26	6	65
	Row N %	20.0%	30.8%	40.0%	9.2%	100.0%
How concerned are you about each of the following in your community? - Availability of long-term care or assisted living facilities	Count	7	5	19	31	62
	Row N %	11.3%	8.1%	30.6%	50.0%	100.0%
How concerned are you about each of the following in your community? - Availability of elder care services to support independent living, or aging in place	Count	3	6	16	36	61
	Row N %	4.9%	9.8%	26.2%	59.0%	100.0%
How concerned are you about each of the following in your community? - Obesity or overweightness	Count	6	9	29	17	61
	Row N %	9.8%	14.8%	47.5%	27.9%	100.0%

Violence Concerns in Community

		Not concerned at all	Slightly concerned	Somewhat concerned	Very concerned	Total
How concerned are you about the following types of violence in your community? - Cyber bullying	Count	4	13	27	18	62
	Row N %	6.5%	21.0%	43.5%	29.0%	100.0%
How concerned are you about the following types of violence in your community? - Child abuse or neglect	Count	8	12	26	17	63
	Row N %	12.7%	19.0%	41.3%	27.0%	100.0%
How concerned are you about the following types of violence in your community? - Intimate partner violence	Count	7	20	22	5	54
	Row N %	13.0%	37.0%	40.7%	9.3%	100.0%
How concerned are you about the following types of violence in your community? - Emotional abuse (including intimidation or isolation)	Count	7	12	28	13	60
	Row N %	11.7%	20.0%	46.7%	21.7%	100.0%
How concerned are you about the following types of violence in your community? - Sexual abuse or assault	Count	9	29	18	6	62
	Row N %	14.5%	46.8%	29.0%	9.7%	100.0%
How concerned are you about the following types of violence in your community? - Stalking	Count	21	19	10	6	56
	Row N %	37.5%	33.9%	17.9%	10.7%	100.0%
How concerned are you about the following types of violence in your community? - Verbal threats or harassment	Count	11	15	26	5	57
	Row N %	19.3%	26.3%	45.6%	8.8%	100.0%
How concerned are you about the following types of violence in your community? - Gun violence	Count	20	18	20	5	63
	Row N %	31.7%	28.6%	31.7%	7.9%	100.0%

Medical Services in Your Community

		Strongly disagree	Somewhat disagree	Neither agree nor disagree	Somewhat agree	Strongly agree	Total
Please indicate your level of agreement with the following issues related to medical services in your community. - It is easy to get an appointment for health care services in my community	Count	9	15	7	19	15	65
	Row N %	13.8%	23.1%	10.8%	29.2%	23.1%	100.0%
Please indicate your level of agreement with the following issues related to medical services in your community. - My community has adequate primary care providers and nurses	Count	14	18	4	21	8	65
	Row N %	21.5%	27.7%	6.2%	32.3%	12.3%	100.0%
Please indicate your level of agreement with the following issues related to medical services in your community. - My community has adequate health care services to meet my health care needs	Count	10	17	11	20	7	65
	Row N %	15.4%	26.2%	16.9%	30.8%	10.8%	100.0%
Please indicate your level of agreement with the following issues related to medical services in your community. - My community has adequate dental care providers	Count	57	4	1	1	2	65
	Row N %	87.7%	6.2%	1.5%	1.5%	3.1%	100.0%
Please indicate your level of agreement with the following issues related to medical services in your community. - My community has adequate vision care providers	Count	50	6	3	4	2	65
	Row N %	76.9%	9.2%	4.6%	6.2%	3.1%	100.0%
Please indicate your level of agreement with the following issues related to medical services in your community. - My community has adequate mental health services	Count	7	15	11	22	6	61
	Row N %	11.5%	24.6%	18.0%	36.1%	9.8%	100.0%
Please indicate your level of agreement with the following issues related to medical services in your community. - My community has adequate access to emergency response services such as ambulance or fire fighters	Count	4	7	8	29	17	65
	Row N %	6.2%	10.8%	12.3%	44.6%	26.2%	100.0%
Please indicate your level of agreement with the following issues related to medical services in your community. - I can easily navigate the health care system in my community	Count	2	12	11	21	19	65
	Row N %	3.1%	18.5%	16.9%	32.3%	29.2%	100.0%
Please indicate your level of agreement with the following issues related to medical services in your community. - I receive quality health care in my community	Count	5	10	11	23	15	64
	Row N %	7.8%	15.6%	17.2%	35.9%	23.4%	100.0%
Please indicate your level of agreement with the following issues related to medical services in your community. - In my community, care is well coordinated across providers and services	Count	7	13	12	24	7	63
	Row N %	11.1%	20.6%	19.0%	38.1%	11.1%	100.0%

		Disagree	Neither agree nor disagree	Agree	Total
RECODE: Medical services in your community. - It is easy to get an appointment for health care services in my community	Count	24	7	34	65
	Row N %	36.9%	10.8%	52.3%	100.0%
RECODE: Medical services in your community. - My community has adequate primary care providers and nurses	Count	32	4	29	65
	Row N %	49.2%	6.2%	44.6%	100.0%
RECODE: Medical services in your community. - My community has adequate health care services to meet my health care needs	Count	27	11	27	65
	Row N %	41.5%	16.9%	41.5%	100.0%
RECODE: Medical services in your community. - My community has adequate dental care providers	Count	61	1	3	65
	Row N %	93.8%	1.5%	4.6%	100.0%
RECODE: Medical services in your community. - My community has adequate vision care providers	Count	56	3	6	65
	Row N %	86.2%	4.6%	9.2%	100.0%
RECODE: Medical services in your community. - My community has adequate mental health services	Count	22	11	28	61
	Row N %	36.1%	18.0%	45.9%	100.0%
RECODE: Medical services in your community. - My community has adequate access to emergency response services such as ambulance or fire fighters	Count	11	8	46	65
	Row N %	16.9%	12.3%	70.8%	100.0%
RECODE: Medical services in your community. - I can easily navigate the health care system in my community	Count	14	11	40	65
	Row N %	21.5%	16.9%	61.5%	100.0%
RECODE: Medical services in your community. - I receive quality health care in my community	Count	15	11	38	64
	Row N %	23.4%	17.2%	59.4%	100.0%
RECODE: Medical services in your community. - In my community, care is well coordinated across providers and services	Count	20	12	31	63
	Row N %	31.7%	19.0%	49.2%	100.0%

Last CHNA Needs

		Much worse	Somewhat worse	About the same	Somewhat better	Much better	Total
Three years ago, the last Community Health Needs Assessment identified the following issues as community health needs. To what degree do you believe these issues have changed? - Lack of health care providers	Count	4	9	20	22	9	64
	Row N %	6.3%	14.1%	31.3%	34.4%	14.1%	100.0%
Three years ago, the last Community Health Needs Assessment identified the following issues as community health needs. To what degree do you believe these issues have changed? - Substance abuse	Count	3	10	35	3	0	51
	Row N %	5.9%	19.6%	68.6%	5.9%	0.0%	100.0%
Three years ago, the last Community Health Needs Assessment identified the following issues as community health needs. To what degree do you believe these issues have changed? - Mental Health	Count	4	8	29	13	5	59
	Row N %	6.8%	13.6%	49.2%	22.0%	8.5%	100.0%
Three years ago, the last Community Health Needs Assessment identified the following issues as community health needs. To what degree do you believe these issues have changed? - Day care	Count	3	12	24	12	5	56
	Row N %	5.4%	21.4%	42.9%	21.4%	8.9%	100.0%
Three years ago, the last Community Health Needs Assessment identified the following issues as community health needs. To what degree do you believe these issues have changed? – Affordable housing	Count	5	15	31	5	2	58
	Row N %	8.6%	25.9%	53.4%	8.6%%	3.4%	100.0%

		Worse	The same	Better	Total
RECODE: previous issues - Lack of health care providers	Count	13	20	31	64
	Row N %	20.3%	31.3%	48.4%	100.0%
RECODE: previous issues - Substance abuse	Count	13	35	3	51
	Row N %	25.5%	68.6%	5.9%	100.0%
RECODE: previous issues - Mental health	Count	12	29	18	59
	Row N %	20.3%	49.2%	30.5%	100.0%
RECODE: previous issues - Day care	Count	15	24	17	56
	Row N %	26.8%	42.9%	30.4%	100.0%
RECODE: previous issues - Affordable housing	Count	20	31	7	58
	Row N %	34.5%	53.4%	12.1%	100.0%

Preventative Health Care Measures

Multiple Response							
	Valid		Missing		Total		
	N	Percent	N	Percent	N	Percent	
MRQ5.1 ^a	63	96.9%	2	3.1%	65	100.0%	

MRQ5.1 Frequencies				
		Responses		Percent of Cases
		N	Percent	
MRQ5.1 ^a	Which of the following preventative health care measures have you received in the last year? Vaccinations	40	14.6%	63.5%
	Which of the following preventative health care measures have you received in the last year? Annual physical exam	50	18.2%	79.4%
	Which of the following preventative health care measures have you received in the last year? Mammogram	38	13.9%	60.3%
	Which of the following preventative health care measures have you received in the last year? Colonoscopy	10	3.6%	15.9%
	Which of the following preventative health care measures have you received in the last year? Blood pressure or cholesterol screening	38	13.9%	60.3%
	Which of the following preventative health care measures have you received in the last year? Counseling for tobacco use, alcohol dependency, weight loss, behavioral health	3	1.1%	4.8%
	Which of the following preventative health care measures have you received in the last year? Depression screening	13	4.7%	20.6%
	Which of the following preventative health care measures have you received in the last year? Vision exam or annual checkup	37	13.5%	58.7%
	Which of the following preventative health care measures have you received in the last year? Dental exam or annual checkup	45	16.4%	71.4%
Total		274	100.0%	434.9%
a. Dichotomy group tabulated at value 1.				

		Not at all a barrier	Somewhat of a barrier	Extreme barrier	Total
To what degree are each of the following issues a barrier to your ability to access health care services? - Transportation to health care service locations	Count	30	29	4	63
	Row N %	47.6%	46.0%	6.3%	100.0%
To what degree are each of the following issues a barrier to your ability to access health care services? - Distance to access care	Count	15	26	24	65
	Row N %	23.1%	40.0%	36.9%	100.0%
To what degree are each of the following issues a barrier to your ability to access health care services? - Concerns about confidentiality	Count	32	27	4	63
	Row N %	50.8%	42.9%	6.3%	100.0%
To what degree are each of the following issues a barrier to your ability to access health care services? - Availability of local services to meet my health care needs	Count	11	33	18	62
	Row N %	17.7%	53.2%	29.0%	100.0%
To what degree are each of the following issues a barrier to your ability to access health care services? - Communication or language barriers	Count	57	5	1	63
	Row N %	90.5%	7.9%	1.6%	100.0%
To what degree are each of the following issues a barrier to your ability to access health care services? - Disability accommodations	Count	44	11	2	57
	Row N %	77.2%	19.3%	3.5%	100.0%
To what degree are each of the following issues a barrier to your ability to access health care services? - Scheduling health care services within clinic hours	Count	35	25	2	62
	Row N %	56.5%	40.3%	3.2%	100.0%
To what degree are each of the following issues a barrier to your ability to access health care services? - The length of time to see a provider, from making an appointment to attending the appointment	Count	22	35	7	64
	Row N %	34.4%	54.7%	10.9%	100.0%
To what degree are each of the following issues a barrier to your ability to access health care services? - The price of prescription drugs, even with insurance	Count	30	23	10	63
	Row N %	47.6%	36.5%	15.9%	100.0%
To what degree are each of the following issues a barrier to your ability to access health care services? - The price of health care services (such as co-payments or deductibles), even with insurance	Count	22	33	10	65
	Row N %	33.8%	50.8%	15.4%	100.0%

Do you currently have a primary care doctor?					
		Frequency	Percent	Valid Percent	Cumulative Percent
Valid	Yes	55	84.6%	91.7%	91.7%
	No	5	7.7%	8.3%	100.0%
	Total	60	92.3%	100.0%	
Missing	Prefer not to respond	5	7.7%		
Total		65	100.0%		

Multiple Response						
	Cases					
	Valid		Missing		Total	
	N	Percent	N	Percent	N	Percent
MRQ5.5 ^a	63	96.9%	2	3.1%	65	100.0%
a. Dichotomy group tabulated at value 1.						

MRQ5.5 Frequencies				
		Responses		Percent of Cases
		N	Percent	
MRQ5.5 ^a	Where do you find out about health information? Other health care professionals	28	13.3%	44.4%
	Where do you find out about health information? Primary care provider	50	23.8%	79.4%
	Where do you find out about health information? Public health professionals	19	9.0%	30.2%
	Where do you find out about health information? Internet sources	44	21.0%	69.8%
	Where do you find out about health information? Word of mouth (including family and friends)	24	11.4%	38.1%
	Where do you find out about health information? Advertising, such as TV commercials	12	5.7%	19.0%
	Where do you find out about health information? My employer	15	7.1%	23.8%
	Where do you find out about health information? Newspaper	10	4.8%	15.9%
	Where do you find out about health information? Radio	6	2.9%	9.5%
	Where do you find out about health information? Other source	2	1.0%	3.2%
Total		210	100.0%	333.3%
a. Dichotomy group tabulated at value 1.				

Multiple Response						
	Cases					
	Valid		Missing		Total	
	N	Percent	N	Percent	N	Percent
MRQ5.6 ^a	64	98.5%	1	1.5%	65	100.0%
a. Dichotomy group tabulated at value 1.						

MRQ5.6 Frequencies				
		Responses		Percent of Cases
		N	Percent	
MRQ5.6 ^a	What type of health insurance coverage do you have? (Select all that apply) - Selected Choice Insurance through employer (either your own or a family member's)	43	53.8%	67.2%
	What type of health insurance coverage do you have? (Select all that apply) - Selected Choice Private health insurance (coverage purchased by you)	14	17.5%	21.9%
	What type of health insurance coverage do you have? (Select all that apply) - Selected Choice Government program (Medicare, Medicaid, etc.)	22	27.5%	34.4%
	What type of health insurance coverage do you have? (Select all that apply) - Selected Choice Other (please specify)	1	1.3%	1.6%
Total		80	100.0%	125.0%
a. Dichotomy group tabulated at value 1.				

SOCIAL HARDSHIP AND DISCRIMINATION

Did you move to your community in the past year?					
		Frequency	Percent	Valid Percent	Cumulative Percent
Valid	Yes	4	6.2%	6.3%	6.3%
	No	59	90.8%	93.7%	100.0%
	Total	63	96.9%	100.0%	
Missing	System	2	3.1%		
Total		65	100.0%		

		Not difficult at all	Slightly difficult	Somewhat difficult	Very difficult	Total
How difficult was it to do the following things? - Enroll children in school	Count	3	0	0	0	3
	Row N %	100.0%	0.0%	0.0%	0.0%	100.0%
How difficult was it to do the following things? - Find housing	Count	1	0	0	2	3
	Row N %	33.3%	0.0%	0.0%	66.7%	100.0%
How difficult was it to do the following things? - Find health care	Count	2	0	1	0	3
	Row N %	66.7%	0.0%	33.3%	0.0%	100.0%
How difficult was it to do the following things? - Find a job	Count	0	2	1	1	4
	Row N %	0.0%	50.0%	25.0%	25.0%	100.0%
How difficult was it to do the following things? - Find child care	Count	1	0	0	2	3
	Row N %	33.3%	0.0%	0.0%	66.7%	100.0%

		Row N %	33.3%	0.0%	0.0%	66.7%	100.0%
Have you experienced discrimination in the past 12 months?							
		Frequency		Percent	Valid Percent	Cumulative Percent	
Valid	Yes	4		6.2%	6.5%	6.5%	
	No	58		89.2%	93.5%	100.0%	
	Total	62		95.4%	100.0%		
Missing	Prefer not to respond	1		1.5%			
	System	2		3.1%			
	Total	3		4.6%			
Total		65		100.0%			

Multiple Response						
Case Summary						
	Cases					
	Valid			Missing		Total
	N	Percent		N	Percent	
MRQ6.4 ^a	4	6.2%		61	93.8%	65
a. Dichotomy group tabulated at value 1.						

MRQ6.4 Frequencies				
		Responses		Percent of Cases
		N	Percent	
MRQ6.4 ^a	In what areas have you experienced discrimination? Select all that apply. - Selected Choice Race	1	12.5%	25.0%
	In what areas have you experienced discrimination? Select all that apply. - Selected Choice Sex	1	12.5%	25.0%
	In what areas have you experienced discrimination? Select all that apply. - Selected Choice Age	1	12.5%	25.0%
	In what areas have you experienced discrimination? Select all that apply. - Selected Choice Weight	2	25.0%	50.0%
	In what areas have you experienced discrimination? Select all that apply. - Selected Choice Disability	1	12.5%	25.0%
	In what areas have you experienced discrimination? Select all that apply. - Selected Choice Another area (please specify)	1	12.5%	25.0%
	In what areas have you experienced discrimination? Select all that apply. - Selected Choice Prefer not to respond	1	12.5%	25.0%
Total		8	100.0%	200.0%
a. Dichotomy group tabulated at value 1.				

Multiple Response						
Case Summary						
	Cases					
	Valid		Missing		Total	
	N	Percent	N	Percent	N	Percent
MRQ6.5 ^a	4	6.2%	61	93.8%	65	100.0%
a. Dichotomy group tabulated at value 1.						

MRQ6.5 Frequencies				
		Responses		Percent of Cases
		N	Percent	
MRQ6.5 ^a	In which of the following situations did you experience discrimination? Select all that apply. - Selected Choice At a job, work or my place of employment	1	25.0%	25.0%
	In which of the following situations did you experience discrimination? Select all that apply. - Selected Choice Looking for housing	1	25.0%	25.0%
	In which of the following situations did you experience discrimination? Select all that apply. - Selected Choice Shopping at a store or eating at a restaurant	1	25.0%	25.0%
	In which of the following situations did you experience discrimination? Select all that apply. - Selected Choice Another area (please specify)	1	25.0%	25.0%
Total		4	100.0%	100.0%
a. Dichotomy group tabulated at value 1.				

How difficult is it for you to pay for heating, housing, or medical care?					
		Frequency	Percent	Valid Percent	Cumulative Percent
Valid	Not difficult at all	31	47.7%	52.5%	52.5%
	Slightly difficult	14	21.5%	23.7%	76.3%
	Somewhat difficult	10	15.4%	16.9%	93.2%
	Very difficult	4	6.2%	6.8%	100.0%
	Total	59	90.8%	100.0%	
Missing	Prefer not to respond	4	6.2%		
	System	2	3.1%		
	Total	6	9.2%		
Total		65	100.0%		

In the last month, have you had to sleep outside, in a shelter, in your car, at a family member or friend's house, or in a place not meant for sleeping?					
		Frequency	Percent	Valid Percent	Cumulative Percent
Valid	No	63	96.9%	100.0%	100.0%
Missing	System	2	3.1%		
Total		65	100.0%		

Statistics		
What is your age? - Select your age on the slider		
N	Valid	57
	Missing	8
Mean		53.7018
Median		55.0000

RECODE: Age					
		Frequency	Percent	Valid Percent	Cumulative Percent
Valid	18 to 34 years	6	9.2%	10.5%	10.5%
	35 to 44 years	9	13.8%	15.8%	26.3%
	45 to 64 years	27	41.5%	47.4%	73.7%
	65 to 84 years	15	23.1%	26.3%	100.0%
	Total	57	87.7%	100.0%	
Missing	System	8	12.3%		
Total		65	100.0%		

What is your gender? - Selected Choice					
		Frequency	Percent	Valid Percent	Cumulative Percent
Valid	Male	7	10.8%	11.3%	11.3%
	Female	55	84.6%	88.7%	100.0%
	Total	62	95.4%	100.0%	
Missing	System	3	4.6%		
Total		65	100.0%		

Multiple Response
Case Summary

	Cases					
	Valid		Missing		Total	
	N	Percent	N	Percent	N	Percent
MRQ7.3 ^a	62	95.4%	3	4.6%	65	100.0%

a. Dichotomy group tabulated at value 1.

MRQ7.3 Frequencies				
		Responses		Percent of Cases
		N	Percent	
MRQ7.3 ^a	Which of these groups best represents your race? Select all that apply. - Selected Choice White	57	90.5%	91.9%
	Which of these groups best represents your race? Select all that apply. - Selected Choice Black or African American	1	1.6%	1.6%
	Which of these groups best represents your race? Select all that apply. - Selected Choice American Indian or Alaska Native	2	3.2%	3.2%
	Which of these groups best represents your race? Select all that apply. - Selected Choice Asian	1	1.6%	1.6%
	Which of these groups best represents your race? Select all that apply. - Selected Choice Prefer not to say	2	3.2%	3.2%
Total		63	100.0%	101.6%
a. Dichotomy group tabulated at value 1.				

Do you identify as Hispanic, Latine, or of Spanish origin?					
		Frequency	Percent	Valid Percent	Cumulative Percent
Valid	Yes	1	1.5%	1.7%	1.7%
	No	57	87.7%	98.3%	100.0%
	Total	58	89.2%	100.0%	
Missing	Prefer not to say	2	3.1%		
	System	5	7.7%		
	Total	7	10.8%		
Total		65	100.0%		

What is your estimated annual household income?					
		Frequency	Percent	Valid Percent	Cumulative Percent
Valid	Less than \$15,000	1	1.5%	1.9%	1.9%
	\$15,000 - \$24,999	1	1.5%	1.9%	3.8%
	\$25,000 - \$49,999	8	12.3%	15.1%	18.9%
	\$50,000 - \$74,999	12	18.5%	22.6%	41.5%
	\$75,000 - \$99,999	12	18.5%	22.6%	64.2%
	\$100,000 - \$149,999	12	18.5%	22.6%	86.8%
	\$150,000 and over	7	10.8%	13.2%	100.0%
	Total	53	81.5%	100.0%	
Missing	Prefer not to say	8	12.3%		
	System	4	6.2%		
	Total	12	18.5%		
Total		65	100.0%		

What is the highest level of education you have completed?					
		Frequency	Percent	Valid Percent	Cumulative Percent
Valid	High school graduate or equivalency	4	6.2%	6.8%	6.8%
	Some college, no degree	11	16.9%	18.6%	25.4%
	Associate's degree	13	20.0%	22.0%	47.5%
	Bachelor's degree	23	35.4%	39.0%	86.4%
	Graduate or professional degree	8	12.3%	13.6%	100.0%
	Total	59	90.8%	100.0%	
Missing	System	6	9.2%		
Total		65	100.0%		

Which of these categories best describes your employment status?					
		Frequency	Percent	Valid Percent	Cumulative Percent
Valid	Employed full time	34	52.3%	61.8%	61.8%
	Employed part time	9	13.8%	16.4%	78.2%
	Retired	12	18.5%	21.8%	100.0%
	Total	55	84.6%	100.0%	
Missing	System	10	15.4%		
Total		65	100.0%		
What is your marital status?					
		Frequency	Percent	Valid Percent	Cumulative Percent
Valid	Single	6	9.2%	10.0%	10.0%
	Married or in a domestic partnership	48	73.8%	80.0%	90.0%
	Divorced or separated	3	4.6%	5.0%	95.0%
	Widowed	3	4.6%	5.0%	100.0%
	Total	60	92.3%	100.0%	
Missing	Prefer not to say	2	3.1%		
	System	3	4.6%		
	Total	5	7.7%		
Total		65	100.0%		

Statistics		
How many people live in your household? Use numbers only. If you live alone, put "1".		
N	Valid	62
	Missing	3
Mean		2.7742
Median		2.0000

RECODE: How many people live in your household?					
		Frequency	Percent	Valid Percent	Cumulative Percent
Valid	1 person	7	10.8%	11.3%	11.3%
	2 to 4 people	50	76.9%	80.6%	91.9%
	5 or more people	5	7.7%	8.1%	100.0%
	Total	62	95.4%	100.0%	
Missing	System	3	4.6%		
Total		65	100.0%		

Do you have access to reliable internet in your home?					
		Frequency	Percent	Valid Percent	Cumulative Percent
Valid	Yes	55	84.6%	91.7%	91.7%
	No	5	7.7%	8.3%	100.0%
	Total	60	92.3%	100.0%	
Missing	Prefer not to respond	1	1.5%		
	System	4	6.2%		
	Total	5	7.7%		
Total		65	100.0%		

How did you get access to this survey, or survey link? - Selected Choice					
		Frequency	Percent	Valid Percent	Cumulative Percent
Valid	Hospital or public health website	15	23.1%	24.6%	24.6%
	Hospital or public health social media page (e.g., Facebook)	20	30.8%	32.8%	57.4%
	Hospital or public health employee directly	9	13.8%	14.8%	72.1%
	Economic development website or social media page	2	3.1%	3.3%	75.4%
	Other website or social media page (please specify)	9	13.8%	14.8%	90.2%
	Direct email (please specify from where)	5	7.7%	8.2%	98.4%
	Another way (please specify)	1	1.5%	1.6%	100.0%
	Total	61	93.8%	100.0%	
Missing	System	4	6.2%		
Total		65	100.0%		

Distribution Channel					
		Frequency	Percent	Valid Percent	Cumulative Percent
Valid	anonymous	63	96.9%	96.9%	96.9%
	qr	2	3.1%	3.1%	100.0%
	Total	65	100.0%	100.0%	